

SCE&G
Lake Murray
Public
Recreation
Sites
February,
2008

Existing & Future Recreation Sites

Park Site #1
17.9 Acres
2,271 Ft Shoreline
340 Total Parking Spaces



Group Shelters & Picnic Tables



Beach Area

Overflow Parking

Legend

— PBL

Type

▭ Public Recreation





NOTICE TO PARK VISITORS
NO SWIMMING
Swimming is prohibited in this area.
PROHIBIDO NADAR
El nadar está prohibido en esta zona.

8 1:05 PM

WELCOME TO SCE&G PUBLIC PARK

LAKE MURRAY-PROJECT 516

FOR INFORMATION CALL: 217-9221

PARKING FEES...CARS \$3.00 · MOTORCYCLES \$2.00 · BUSES \$5.00

SEASON PASS AVAILABLE FOR \$45.00 PER YEAR

NOTICE

- NO LIFEGUARD ON DUTY
- SWIM AT OWN RISK

ATENCIÓN

- NO HAY SALVAVIDAS
- NADEN A SU PROPIO RIESGO

PARK HOURS

WEEKDAYS 11AM 8PM
WEEKENDS 10AM 8PM

- SECURITY GUARD ON DUTY
- NO PETS ALLOWED
- NO ALCOHOLIC BEVERAGES ALLOWED

8 1:04 PM







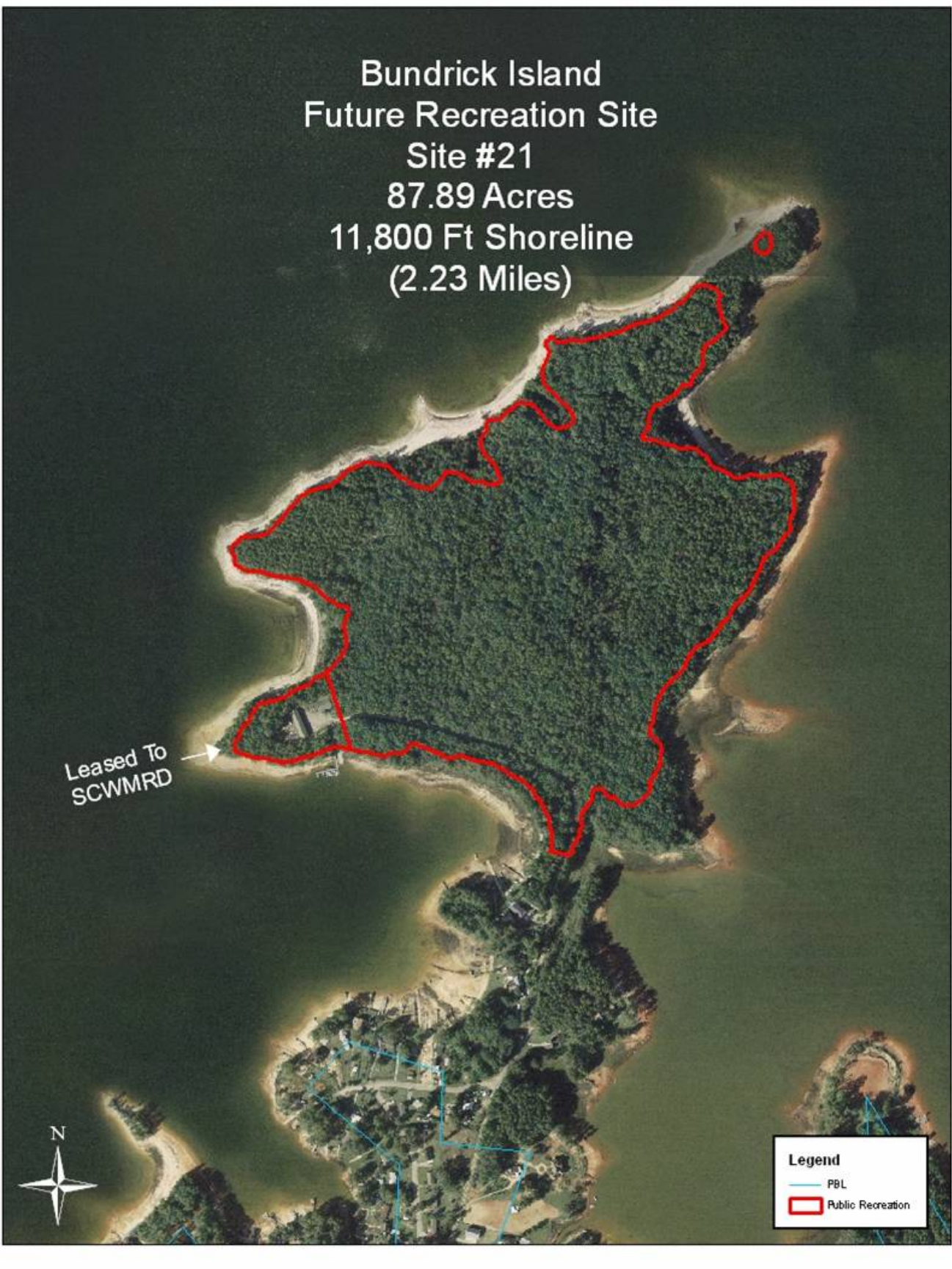
Bundrick Island
Future Recreation Site
Site #21
87.89 Acres
11,800 Ft Shoreline
(2.23 Miles)

Leased To
SCWMRD



Legend

- PBL
- Public Recreation



Shull Island
Site #2 - 1.82 Acres
434 Ft Shoreline

Shull Island
Site #2B
.36 Acres
115.5 Ft Shoreline

Courtesy Dock



Boat Ramp



Parking Spaces = 64

Parking Spaces = 5

Boat Ramp



Legend

FBL

Public Recreation







PARK RULES

NO

CAMPING
SWIMMING
LOITERING
ALCOHOL
EXCESSIVE NOISE

BOATS HAVE PRIORITY
ON RAMPS AND DOCKS

THIS PARK IS UNDER
JURISDICTION OF THE
LEXINGTON COUNTY
SHERIFF'S DEPARTMENT



NOV 30 2007

UNLAWFUL
TO OBSTRUCT
RAMP (OR) DOCK
ACCESS AREA
TOWING ENFORCED
FINES UP TO \$100
S.C. CODE SSC. 50-21-148

NOTICE
NO LIFEGUARD
ON DUTY
SWIM AT OWN RISK
ATENCIÓN
NO HAY
SALVAVIDAS
NADEN A SU PROPIO RIESGO

OCT 20 2006





NOV 30 2007



Shull Island
Site #2A
22.4 Acres

Proposed
Future
Recreation
+/- 5.5 Acres



Legend
— PBL



Murray Shores
Site #3
1.61 Acres
1,016 Ft Shoreline

Parking Spaces = 30

Courtesy Dock
Boat Ramp

Legend
— PBL
▭ Public Recreation



WELCOME
TO
Murray Shores
OWNED AND OPERATED BY
**SOUTH CAROLINA
ELECTRIC & GAS CO.**
Recreation Facilities Open to Public
FOR INFORMATION CALL 748-3007
SOUTH CAROLINA
RECREATION DEVELOPMENT
PROJECTS

**PARK CLOSES
AT SUNDOWN
EXCEPT FOR
BOATERS**
*This Property is Under The Jurisdiction
Of The Beaufort County Sheriff Department.*

NOV 30 2007

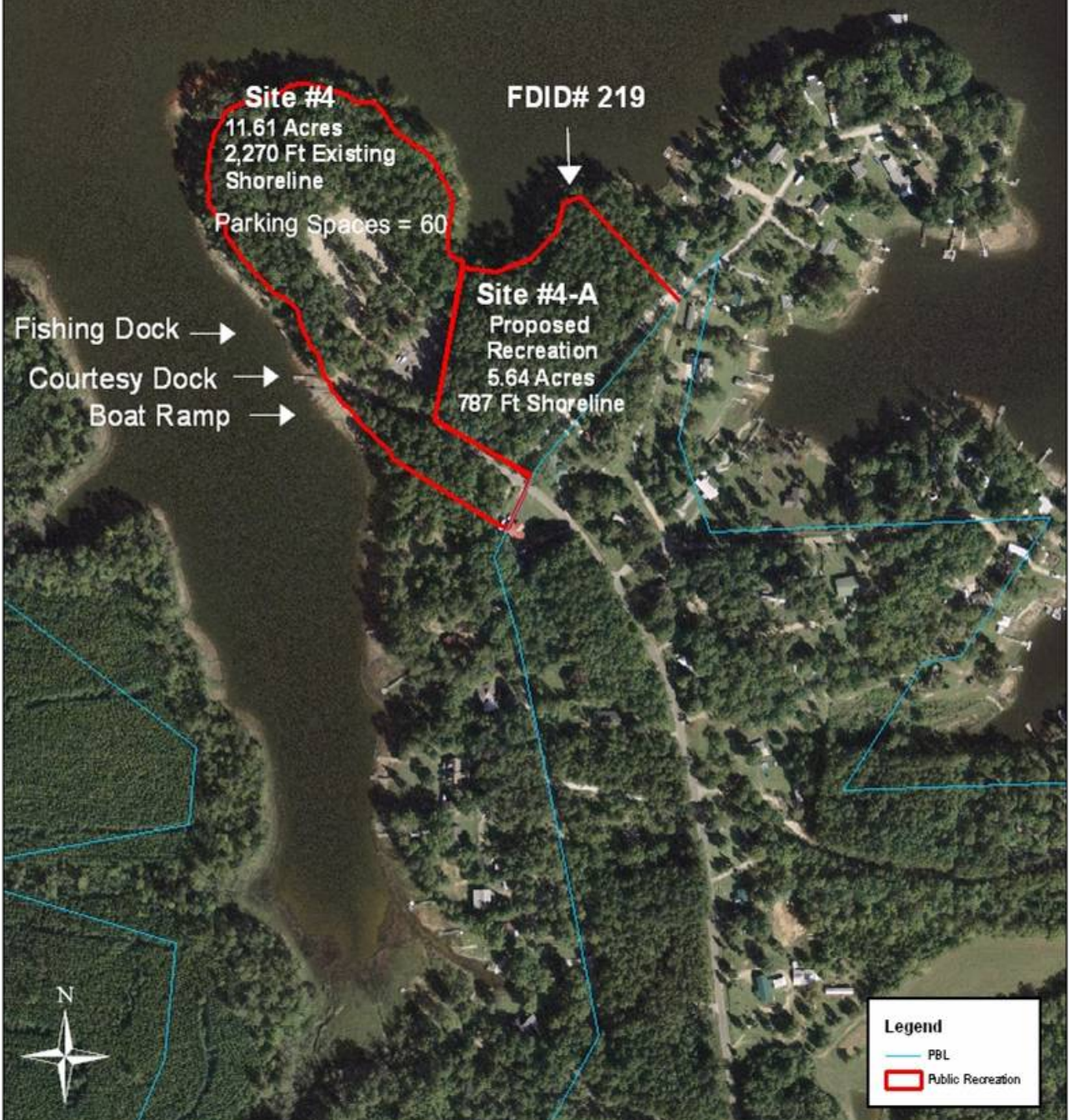


NOV 30 2007





River Bend Site #4 & #4-A



















Little Saluda Point Future Recreation Site Site #20

Existing Recreation Site
15.41 Acres
3,765 Ft Shoreline



Proposed Recreation Site
14.18 Acres
1,147 Ft Shoreline



FDID# 220



Legend

- PBL
- Public Recreation



**Clouds Creek
Future Recreation
Site #18
3.04 Acres
943 Ft Shoreline**



Legend

- PBL
- ▭ Public Recreation

Lake Murray Estates
Site #22
7.65 Acres
910 Ft Shoreline

Fishing Dock

Courtesy Dock

Boat Ramp



Legend

-  PBL
-  Public Recreation



**PARK CLOSES
AT SUNDOWN
EXCEPT FOR
BOATERS**

*This Property Is Under The Jurisdiction
Of The Saluda County Sheriff Department.*

NOTICE

**NO LIFEGUARD
ON DUTY**

SWIM AT OWN RISK



NOV 30 2007





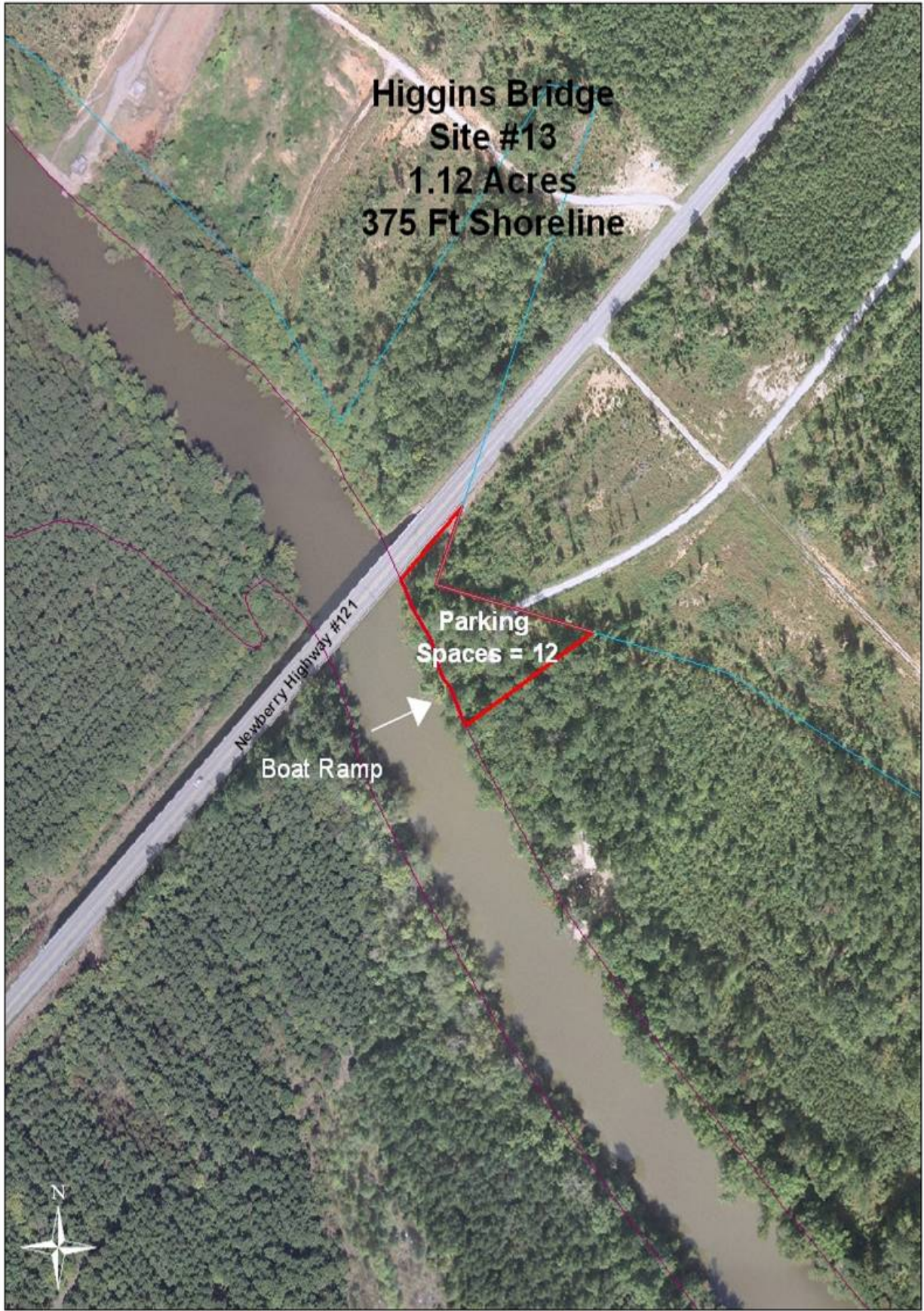


**Higgins Bridge
Site #13
1.12 Acres
375 Ft Shoreline**

**Parking
Spaces = 12**

Boat Ramp

Newberry Highway #121







**Kempsons Bridge
Site #14
2.93 Acres
600 Ft Shoreline**

Kempsons Bridge Rd

Fishing Dock →

Courtesy Dock →

Boat Ramp →

Parking Spaces = 20

Back Property



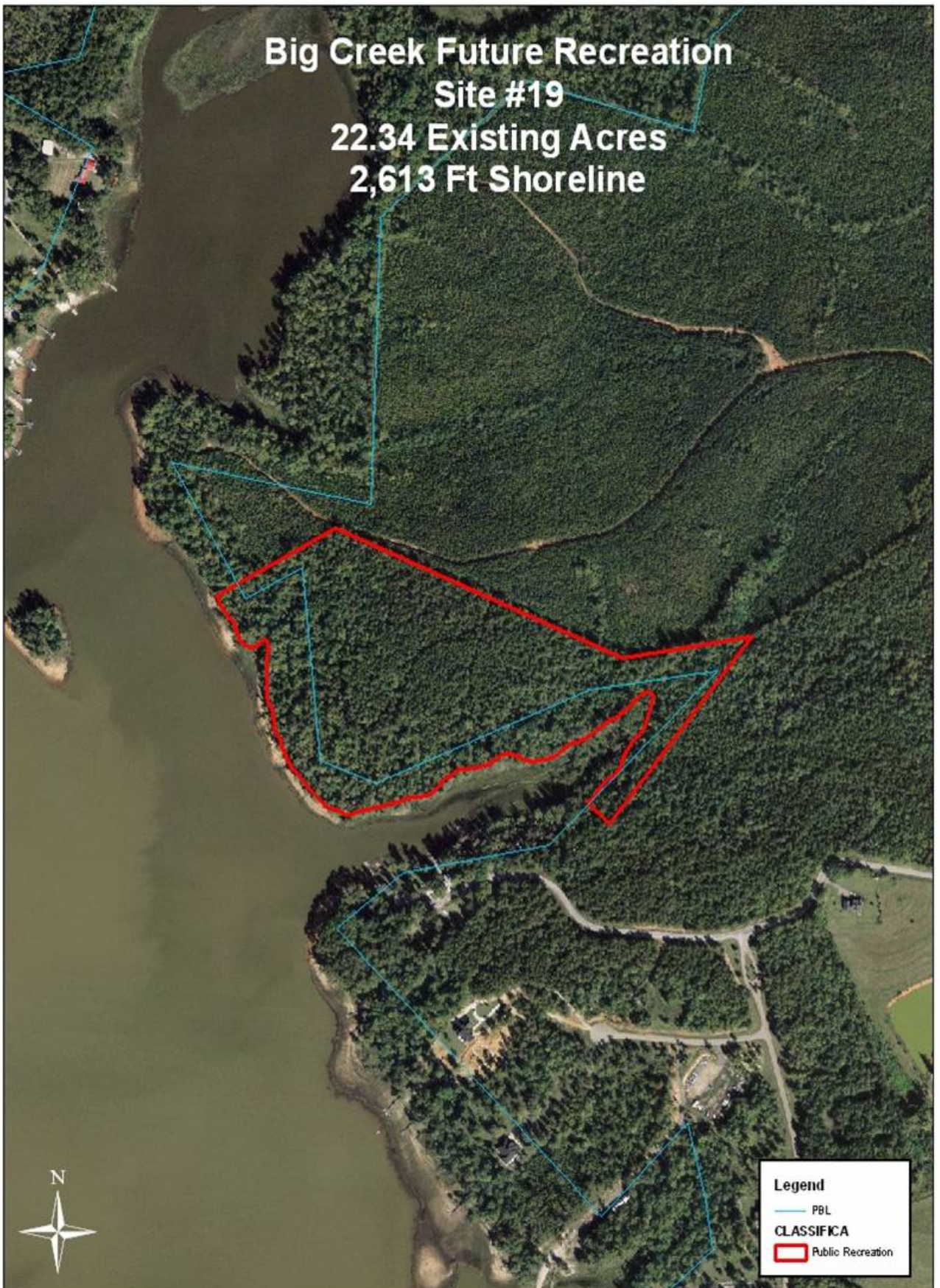
Legend

- PBL
- Type
- Public Recreation
- WorkZone5.sid
- RGB
- Red: Band_1
- Green: Band_2
- Blue: Band_3





**Big Creek Future Recreation
Site #19
22.34 Existing Acres
2,613 Ft Shoreline**



Legend
— PBL
CLASSIFICA
Public Recreation

Simpsons Ferry Future Recreation
Site #5A
11.58 Acres
3,247 Ft Shoreline



Currently Leased

Legend

- PBL
- Public Recreation

Sunset Park
Site #5
2.28 Acres
640 Existing Ft Shoreline
2,300 Proposed Ft Shoreline

Courtesy Dock

Parking
Spaces = 30

Boat Ramp

Fishing Dock

5.5 Acres Inside PBL

FDID# 25



Legend

- PBL
- Public Recreation





**Welcome To
 Sunset Recreation Area**
Park Rules
 1. Park Hours - Sunset to Sunset
 2. No Alcoholic Beverages or Illegal Drugs Allowed
 3. No Littering
 4. No Fire Except on Boat
 5. Park Open Only to Fishermen and Campers After Dark
 6. Primitive Camping in Designated Areas Only
 7. No Open Fires
 8. No Loud or Abused Language

 The facility is under the jurisdiction of the
 Newberry County Board of Forestry and
 South Carolina Department of Natural Resources

NOV 29 2007







Macedoina
Site #12
4.83 Acres
2,491 Ft Shoreline

Legend

- PBL
- Public Recreation







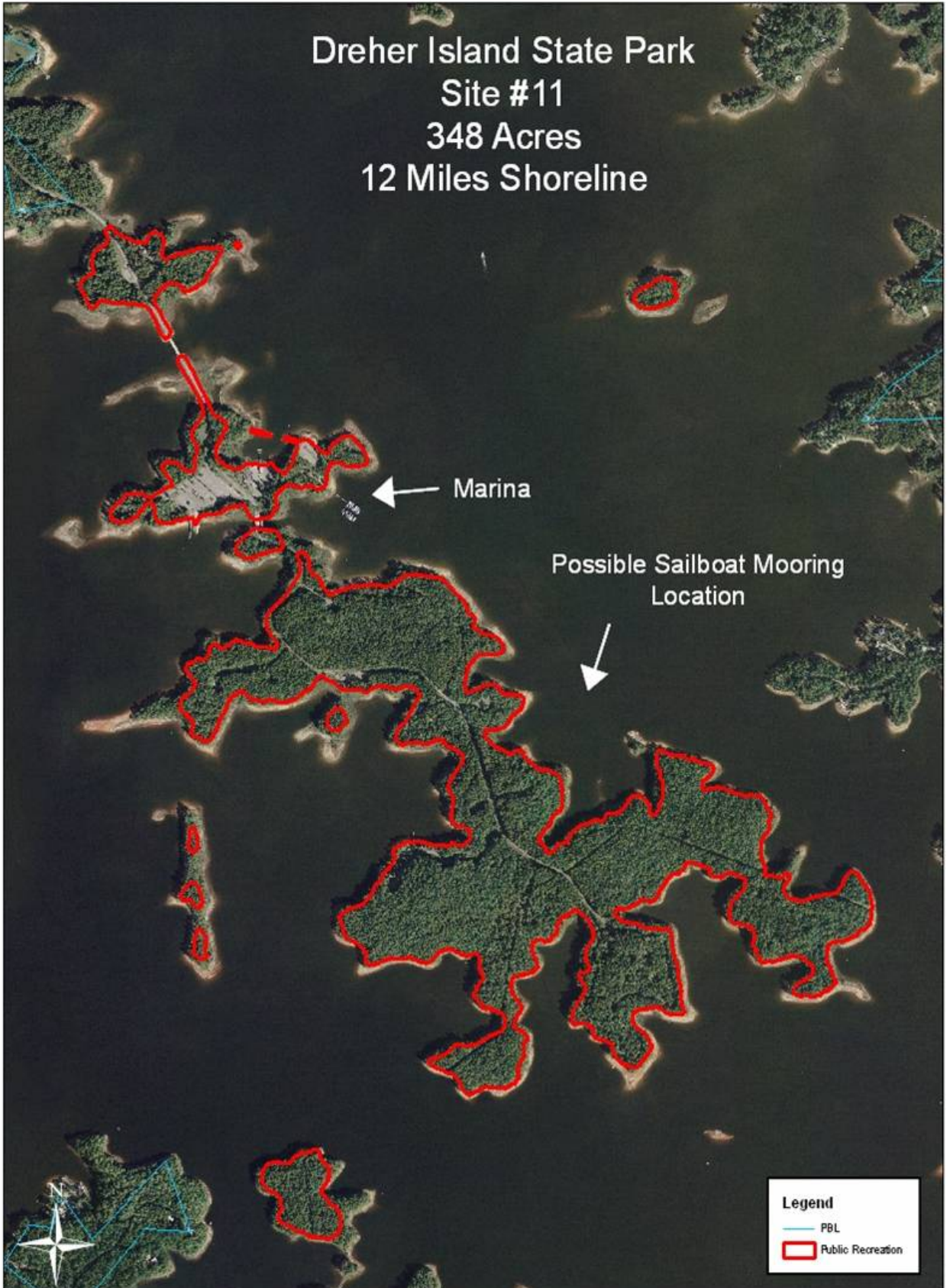
Dreher Island State Park
Site #11
348 Acres
12 Miles Shoreline

Marina

Possible Sailboat Mooring
Location

Legend

- PBL
- Public Recreation



DREHER ISLAND



STATE
RECREATION
AREA

S.C. DEPT. OF PARKS, RECREATION AND TOURISM

JAN 18 2008



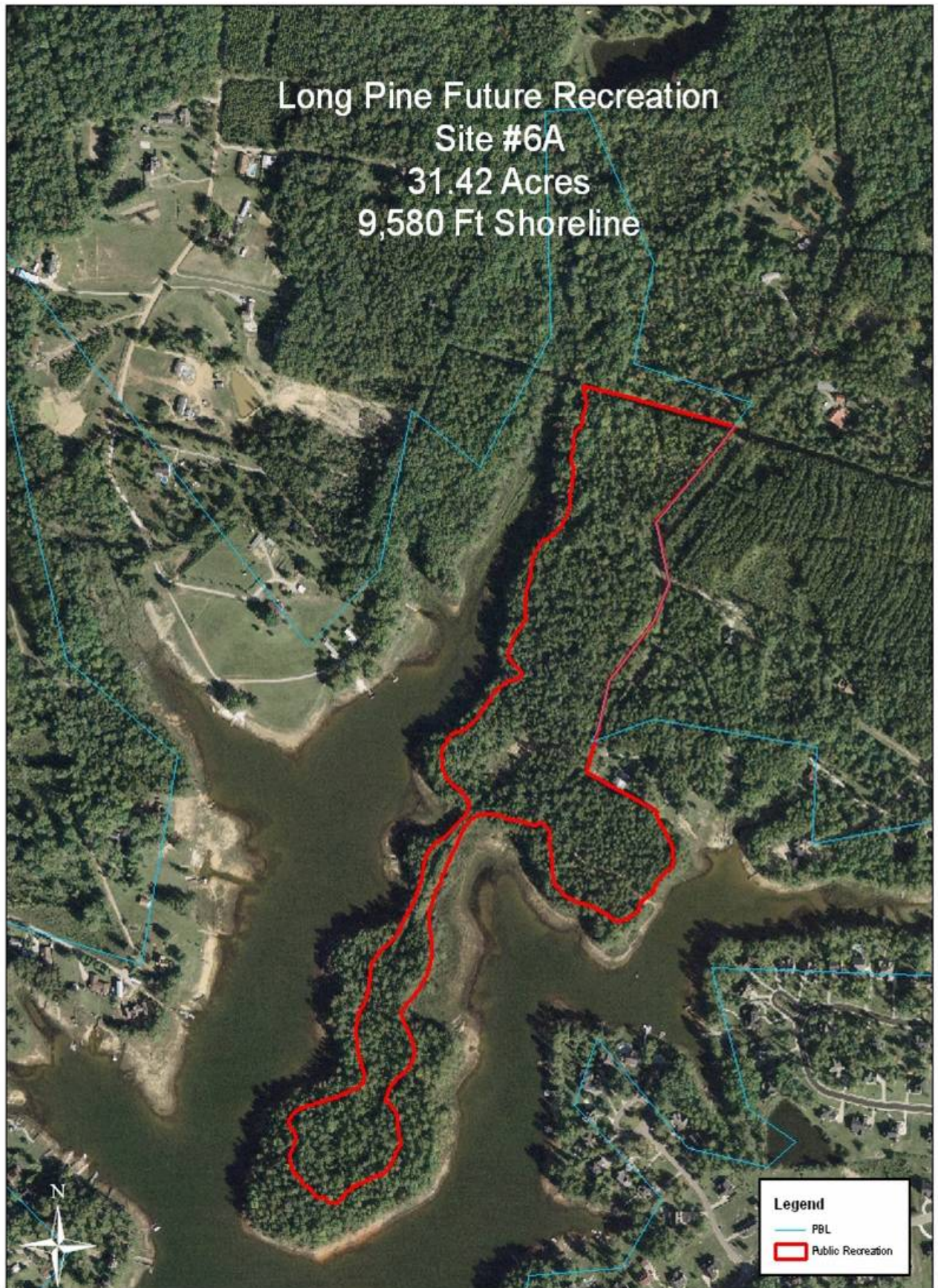




NOV 29 2007



Long Pine Future Recreation
Site #6A
31.42 Acres
9,580 Ft Shoreline



Legend

- PBL
- Public Recreation

**Rocky Point
Site #6
1.73 Acres
258 Ft Shoreline**

Boat Ramp



**Parking
Spaces = 10**



Legend

-  PBL
-  Public Recreation

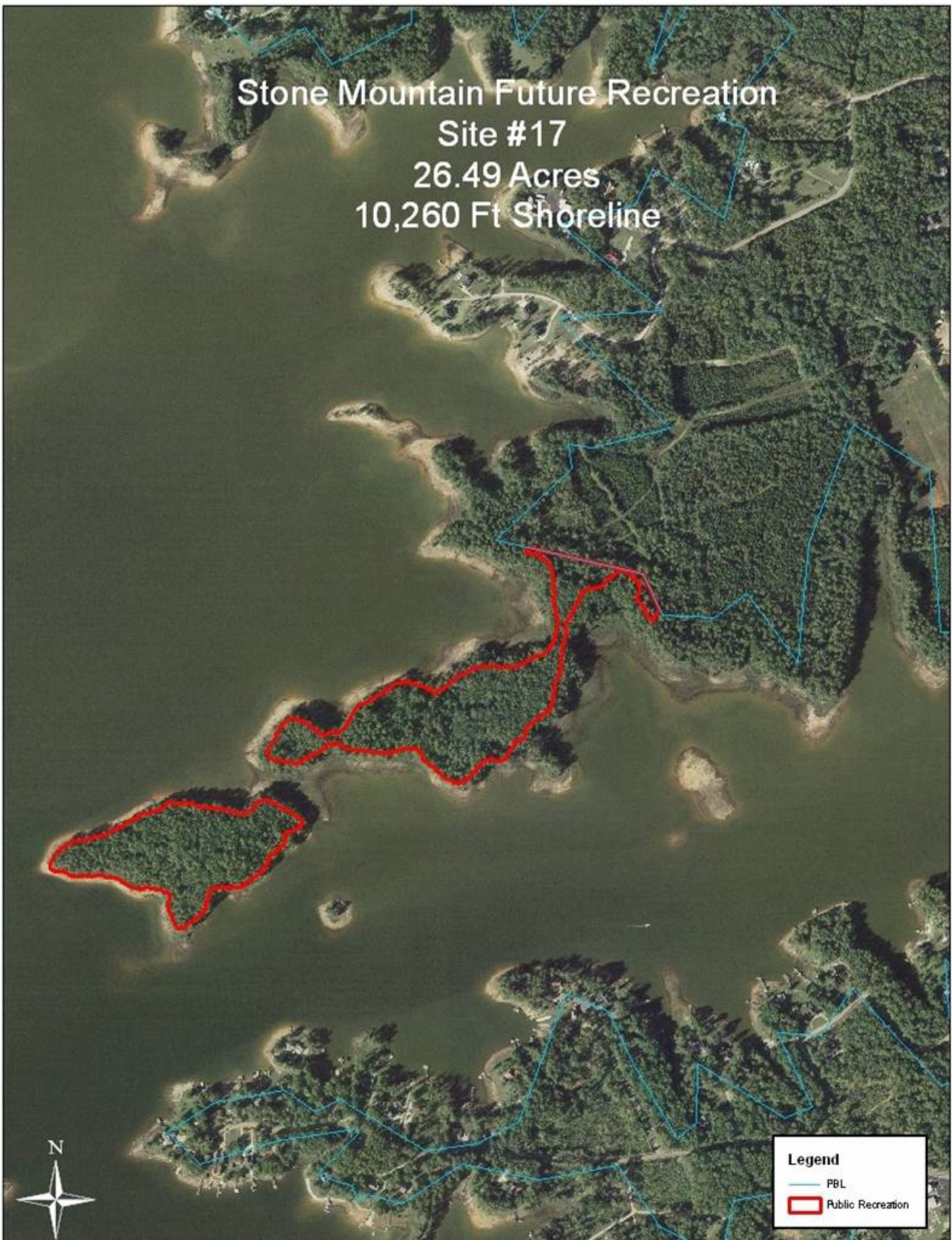




NOV 29 2007



Stone Mountain Future Recreation
Site #17
26.49 Acres
10,260 Ft Shoreline



Legend

- PBL
- Public Recreation

Hilton Park
Site #7
4.36 Acres
1,219 Ft Shoreline

Parking Spaces = 45

Fishing Pier

Courtesy Dock

Boat Ramp

Legend

PBL

Public Recreation







NO POLYMER TANKS
OR CANNAGE PERMITTED
VIOLATORS WILL BE
PROSECUTED

NOV 29 2007







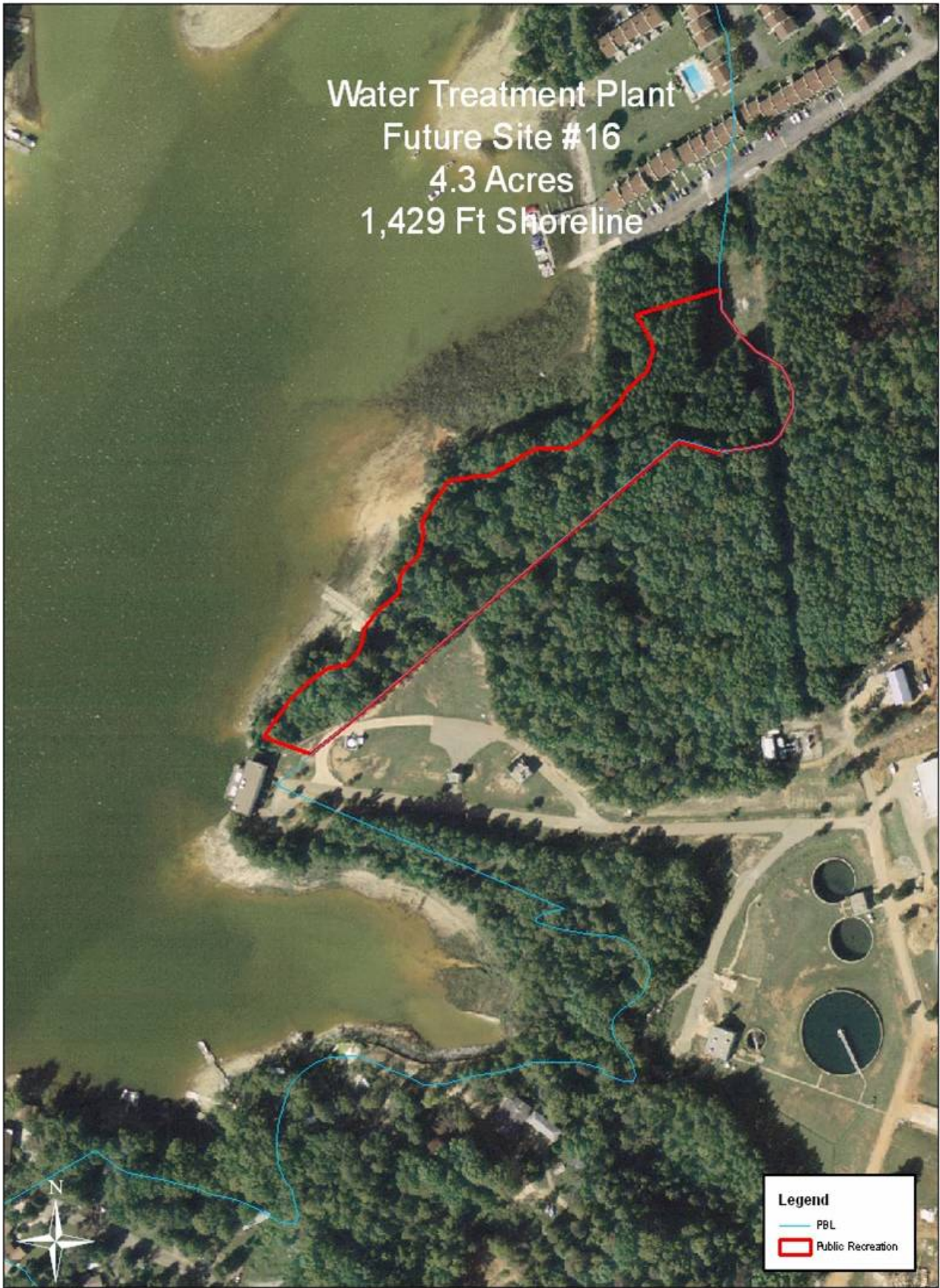
Hilton Park Future Recreation
Site #7A
27.86 Acres
1,755 Ft Shoreline





Legend

- PBL
- Public Recreation

Water Treatment Plant
Future Site #16
4.3 Acres
1,429 Ft Shoreline



Legend

-  PBL
-  Public Recreation

Park Site #8
6.83 Acres
1,388 Ft Shoreline

Courtesy Dock →

Boat Ramp →

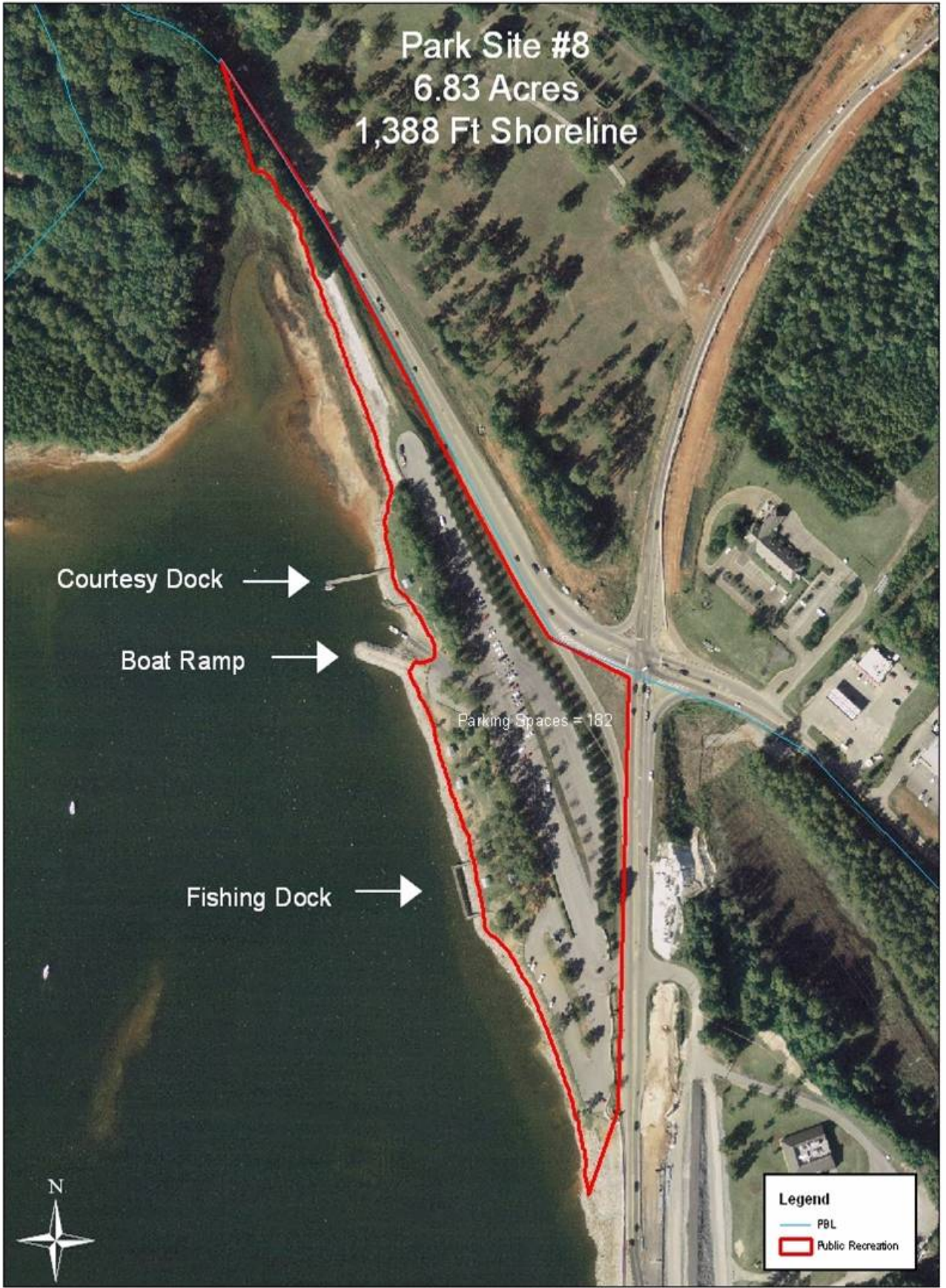
Fishing Dock →

Parking Spaces = 182



Legend

-  PBL
-  Public Recreation





NOV 30 2007







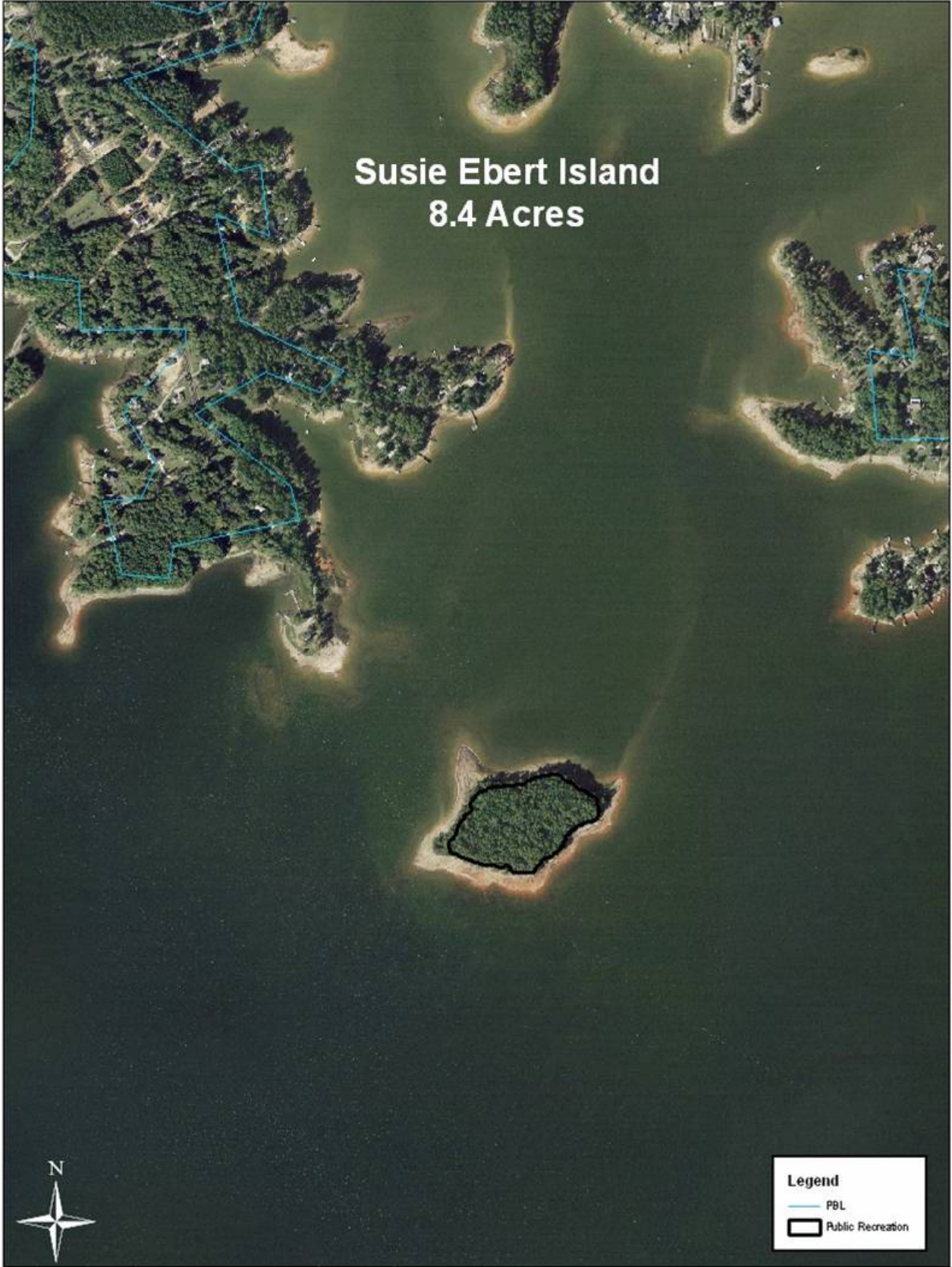


Susie Ebert Island 8.4 Acres



Legend

-  PBL
-  Public Recreation



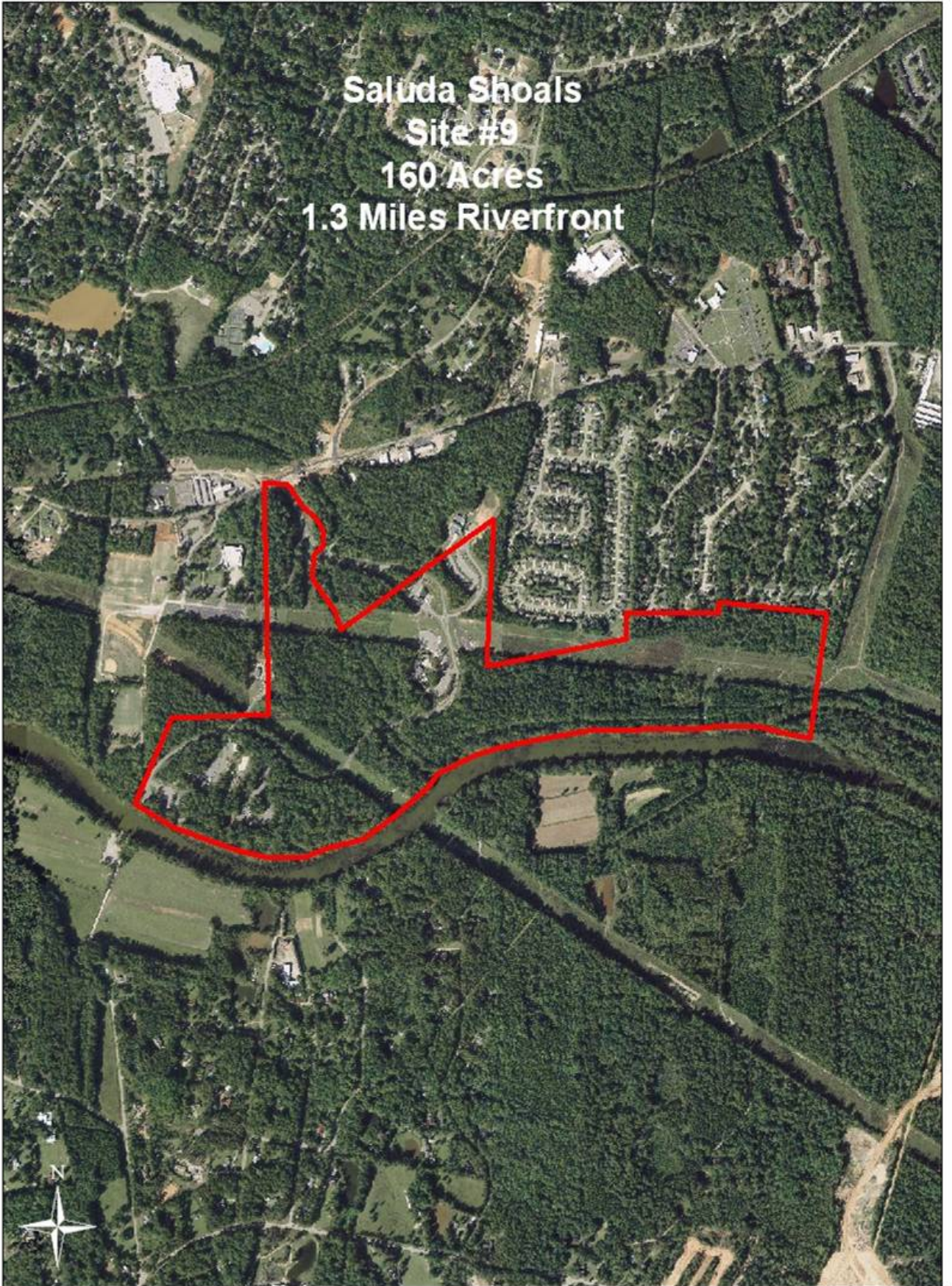
Wessinger Island
35.7 Acres



Legend

- PBL
- ▭ Public Recreation

**Saluda Shoals
Site #9
160 Acres
1.3 Miles Riverfront**

















Boat Ramp

Metts Landing
Canoe Portage
Site #10
1 Acre
150 Ft Shoreline

Legend
— PBL
Public Recreation







Saluda River - Gardendale
Canoe Portage
Site #15
4.65 Acres
210 Ft Shoreline

Back Property

Back Property

Canoe Portage

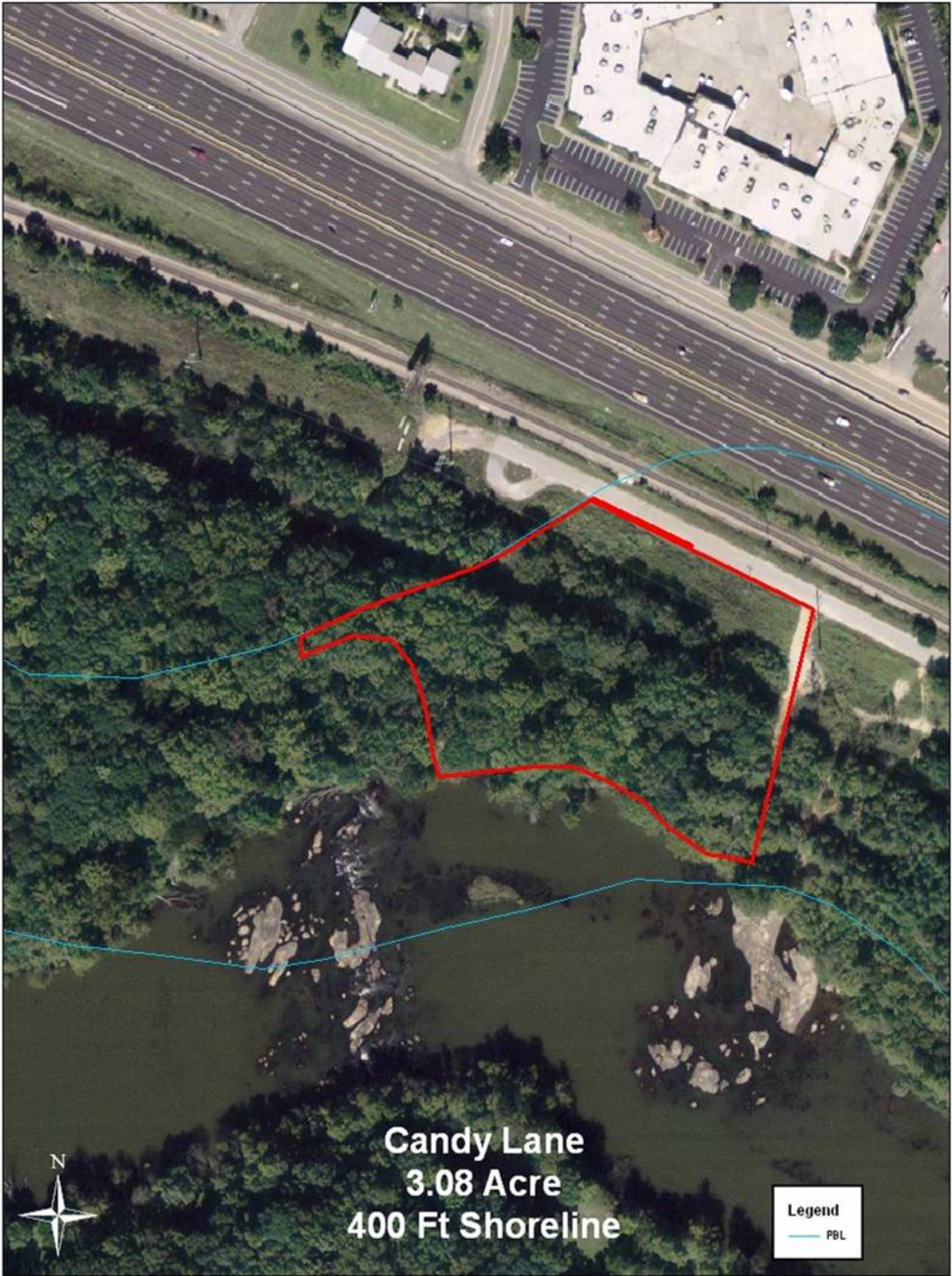


Legend

-  PBL
-  Public Recreation



**Additional
Proposed
Future
Recreation
Sites**



Candy Lane
3.08 Acre
400 Ft Shoreline

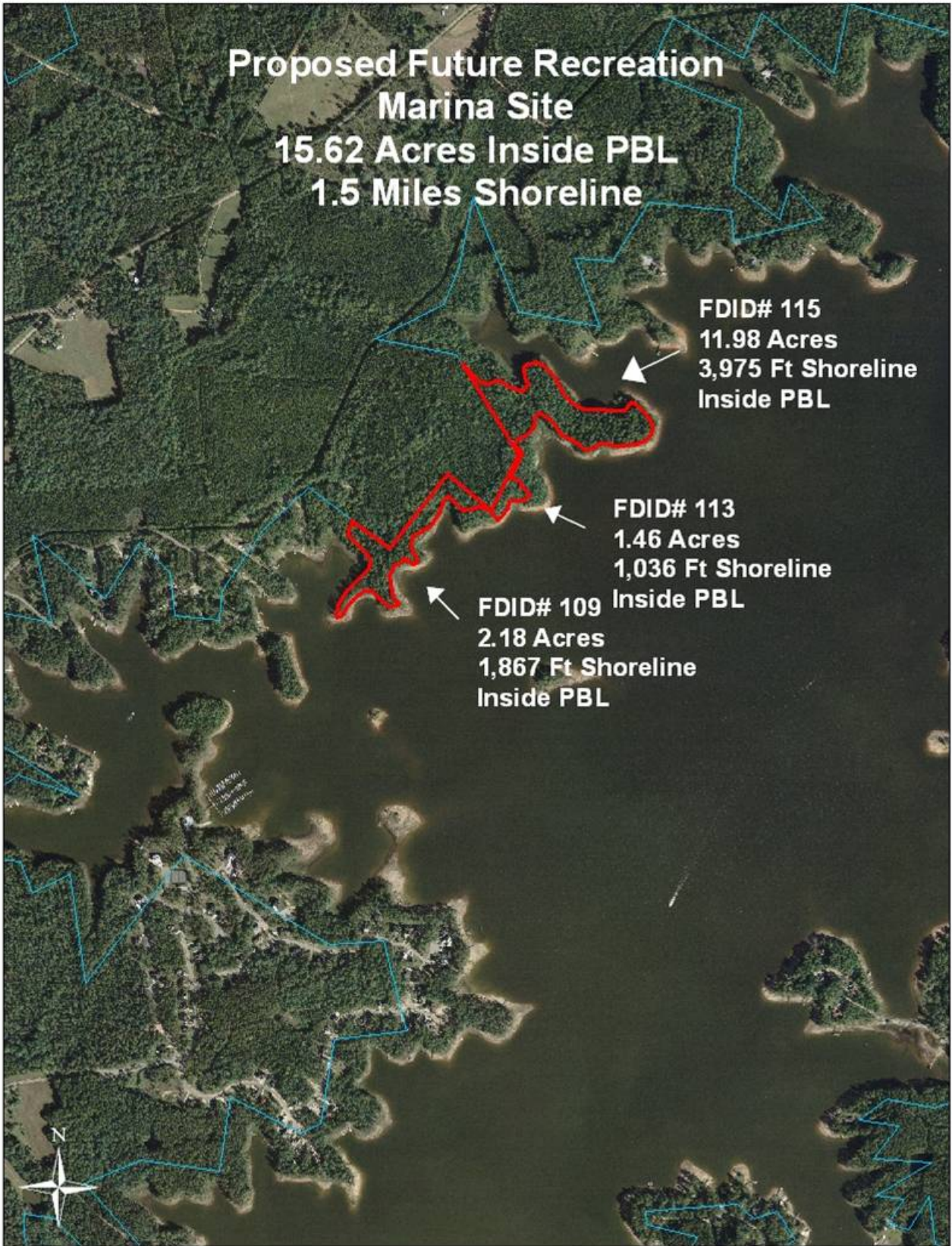
Legend
— PBL

**Proposed Future Recreation
Marina Site
15.62 Acres Inside PBL
1.5 Miles Shoreline**

**FDID# 115
11.98 Acres
3,975 Ft Shoreline
Inside PBL**

**FDID# 113
1.46 Acres
1,036 Ft Shoreline
Inside PBL**

**FDID# 109
2.18 Acres
1,867 Ft Shoreline
Inside PBL**



Proposed Future Recreation Shealy Point



Back Property
3.2 Acres
Outside PBL

Eagle Nest

FDID# 165
17.05 Acres
2,109 Ft Shoreline
Inside PBL

FDID# 171
19.86 Acres
5,859 Ft Shoreline
Inside PBL



Little Saluda Point Future Recreation Site Site #20

Existing Recreation Site
15.41 Acres
3,765 Ft Shoreline



Proposed Recreation Site
14.18 Acres
1,147 Ft Shoreline



FDID# 220

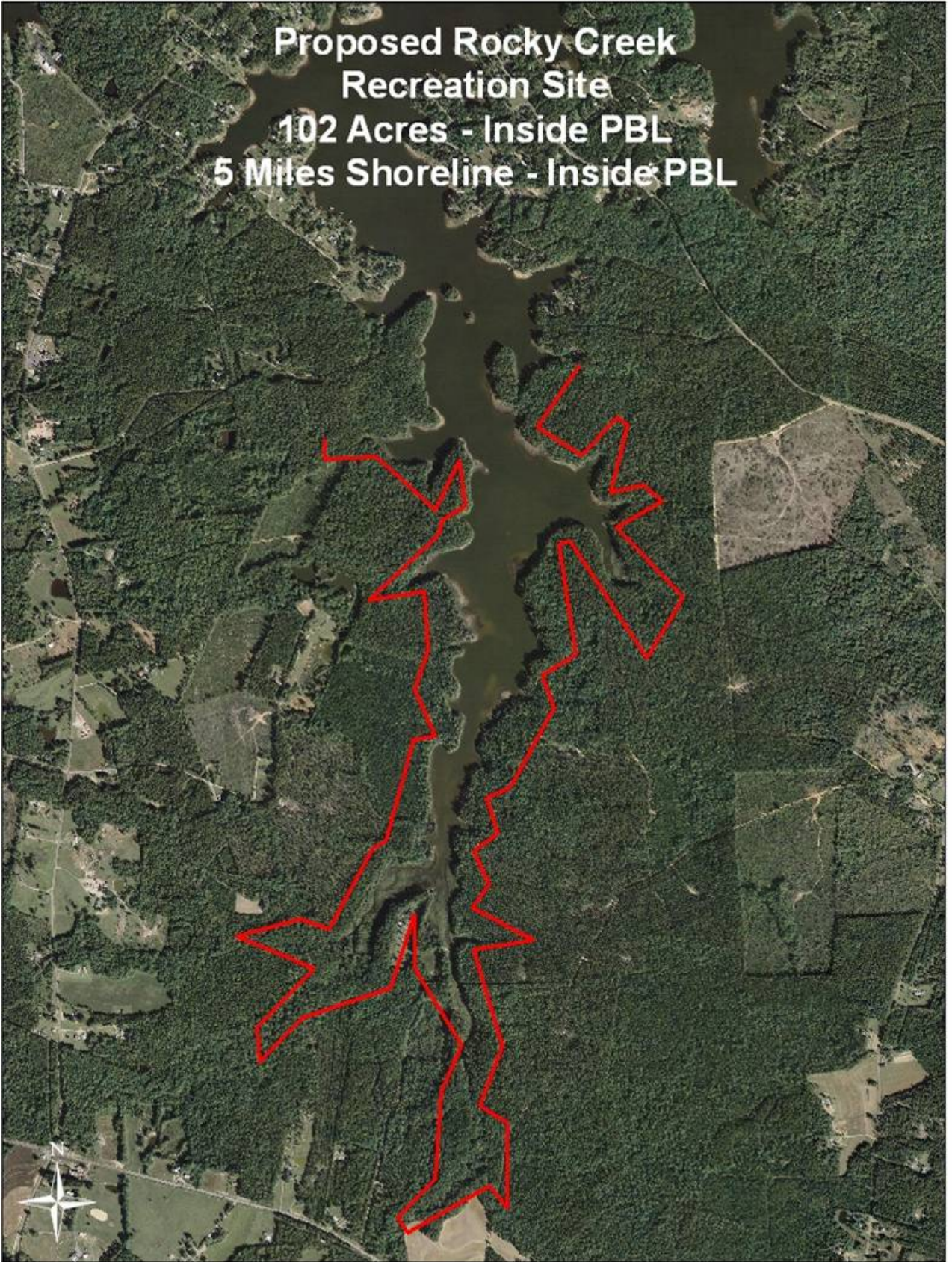


Legend

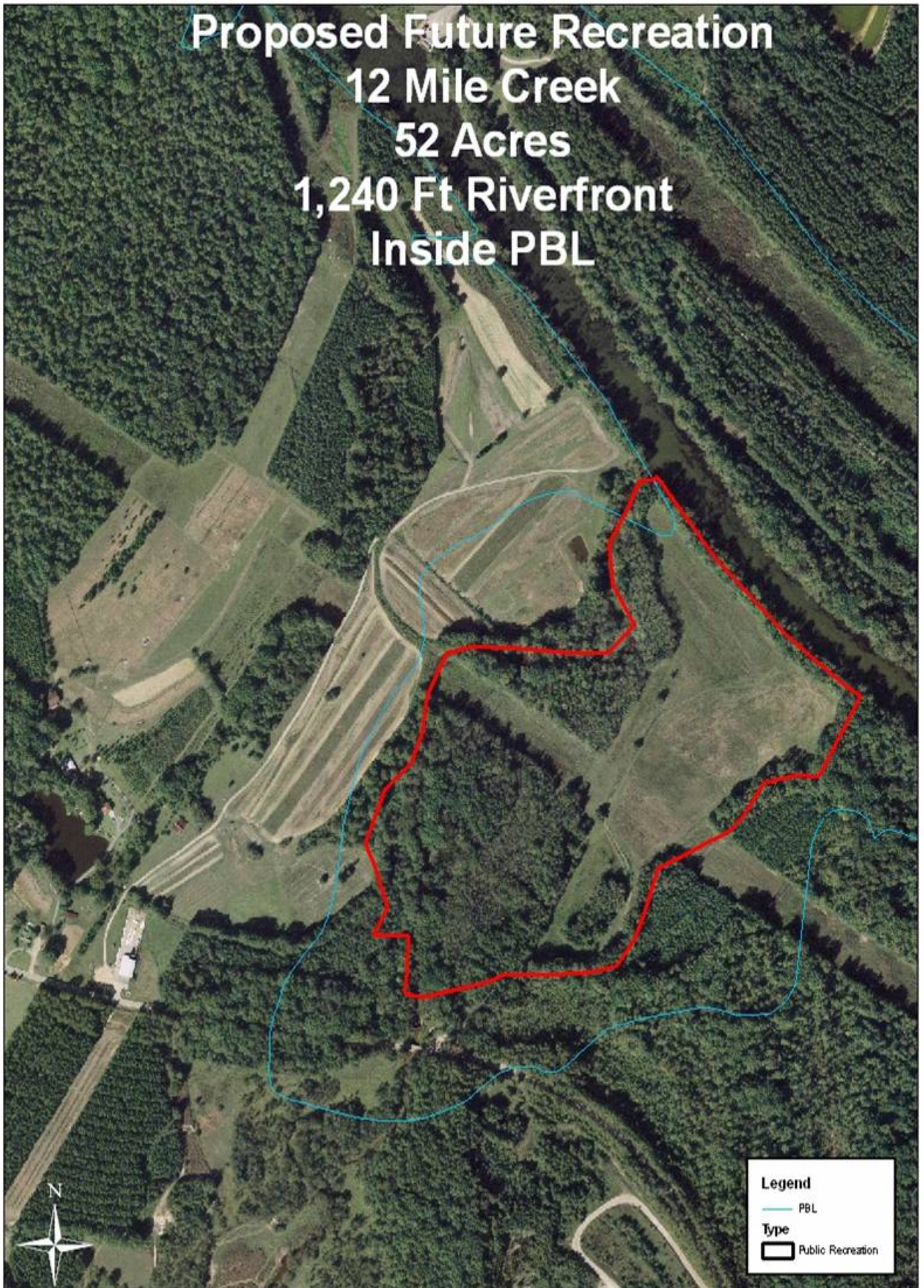
- PBL
- Public Recreation



**Proposed Rocky Creek
Recreation Site
102 Acres - Inside PBL
5 Miles Shoreline - Inside PBL**



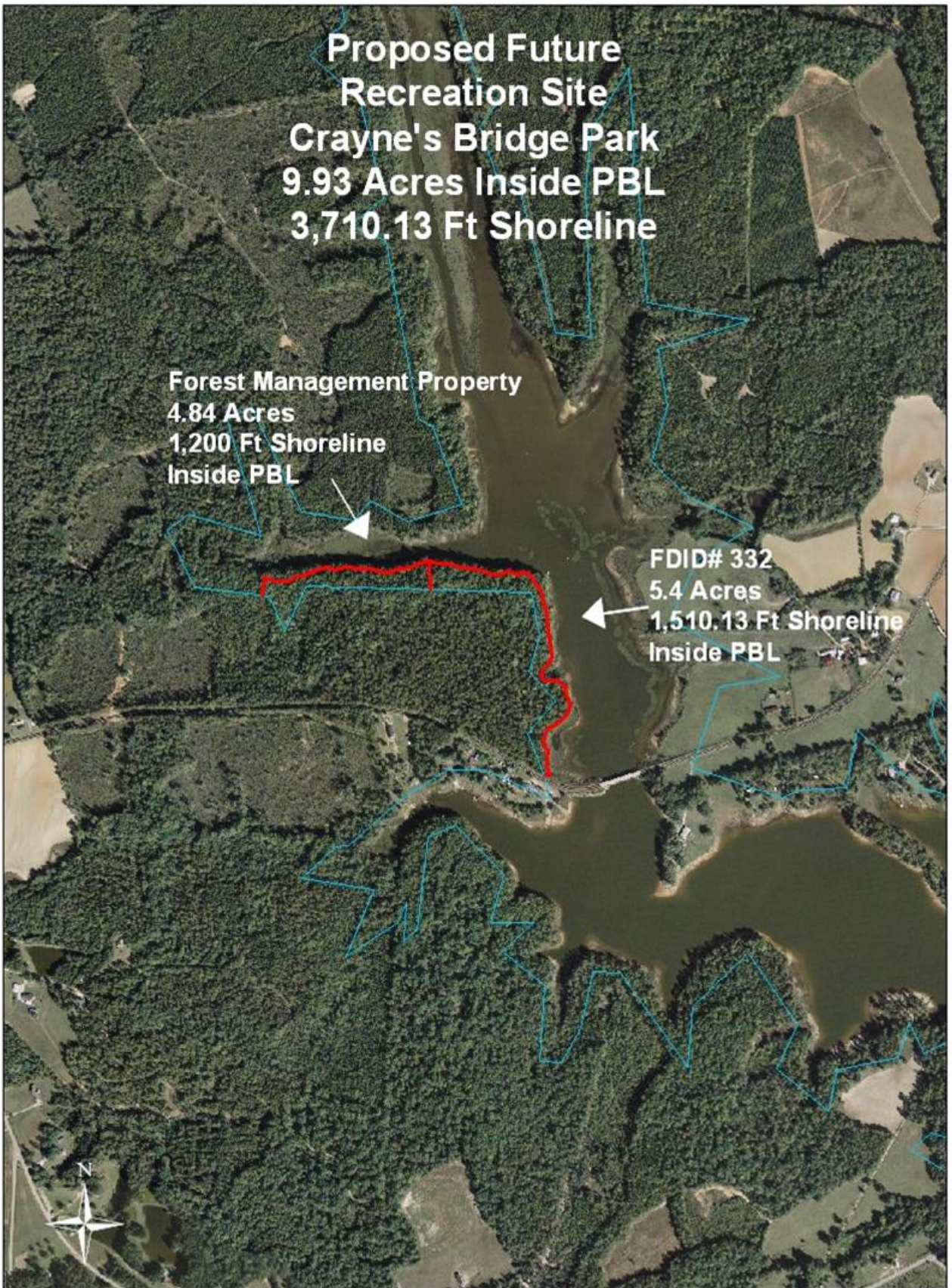
**Proposed Future Recreation
12 Mile Creek
52 Acres
1,240 Ft Riverfront
Inside PBL**

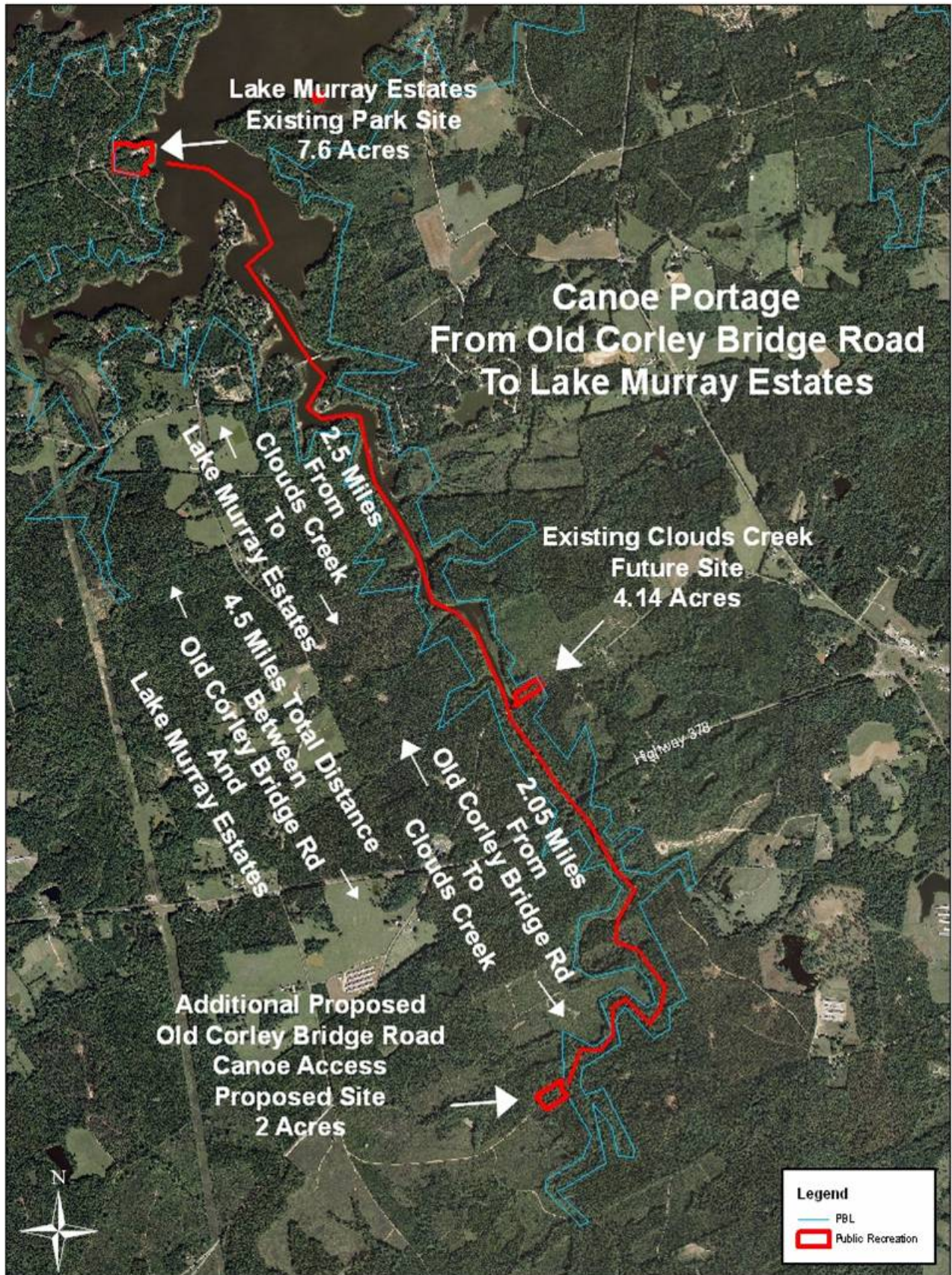


**Proposed Future
Recreation Site
Crayne's Bridge Park
9.93 Acres Inside PBL
3,710.13 Ft Shoreline**

**Forest Management Property
4.84 Acres
1,200 Ft Shoreline
Inside PBL**

**FDID# 332
5.4 Acres
1,510.13 Ft Shoreline
Inside PBL**

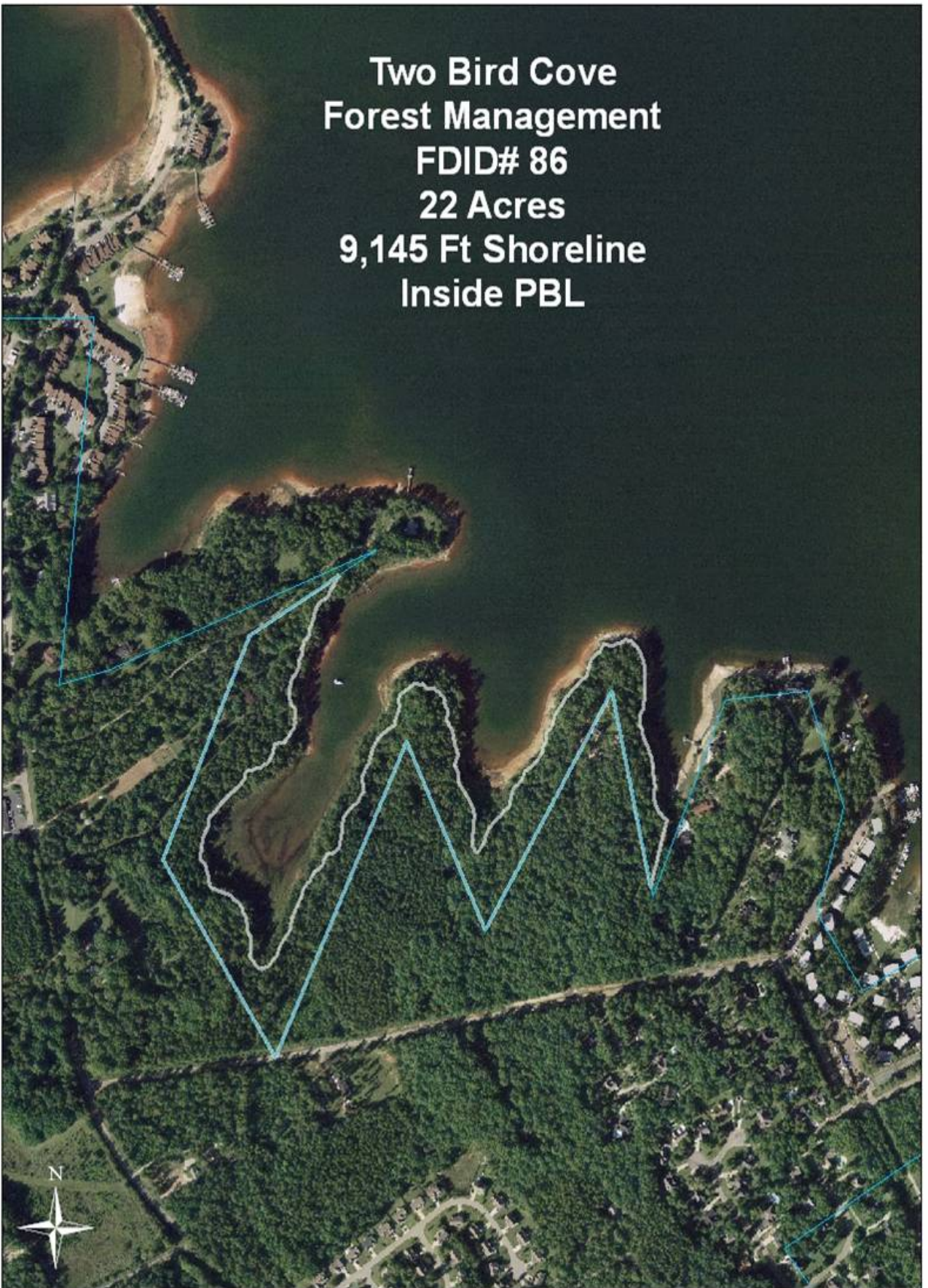




Proposed Future
Recreation Site
Little River
FDID# 163
2.83 Acres
432 Ft Shoreline
Inside PBL



**Two Bird Cove
Forest Management
FDID# 86
22 Acres
9,145 Ft Shoreline
Inside PBL**



Existing Park Sites

Site Name (Site Number)	Acres	Shoreline
Billy Dreher State Park (1-11)	348	12Miles
Dam (1-8)	6.8	1388Ft
Higgins Bridge (1-13)	1.1	375Ft
Hilton (1-7)	4.4	1219Ft
Kempson Bridge (1-14)	2.93	600Ft
Lake Murray Estates (1-22)	5	910Ft
Macedonia Church (1-12)	5.3	2491Ft
Murray Shores (1-3)	1.6	1016Ft
Parksite (1-1)	17.9	2271Ft
River Bend (1-4 & 4-A)	11.6	2720Ft
Rocky Point Creek (1-6)	1.7	258Ft
Shull Island (1-2B)	0.36	115.5Ft
Shull Island / Larry Koon (1-2)	2.2	434Ft
Sunset 1-(5)	2.3	640Ft
Total	411.19	14.8 Miles

Existing Future Sites

Future Sites	Acres	Shoreline
Shull Island (1-2A)	22.4	0
Simpson's Ferry (5-A)	11.58	3247Ft
Long Pine (6-A)	31.4	9580Ft
Hilton (1-7A)	27.86	1755Ft
Water Treatment Plant (16)	4.3	1429Ft
Stone Mountain (17)	26.47	10260Ft
Cloud's Creek (18)	3.04	3765Ft
Big Creek (19)	22.34	2613Ft
Little Saluda Point (20)	15.14	3765Ft
Bundrick Island (21)	87.89	2.23Miles
Total	252.42	9.12 Miles

Islands and Lower Saluda River Existing Recreation

Site Name (Site Number)	Acres	Shoreline
Islands (62)	100	13.81 Miles
Lower Saluda River		
Hope Ferry - Metts Landing (1-10)	1	150Ft
Saluda River Canoe Portage (1-15)	4.6	210Ft
Saluda Shoals Park (1-9)	160	1.3Miles
Total	165.6	1.36 Miles

Proposed New Future Recreation Sites

Proposed Future Sites	Acres	Shoreline
River Bend	5.64	787Ft
Sunset	5.5	2300Ft
Candy Lane	3.08	400Ft
Shull Island	5.5	0
12 Mile Creek	52	1240Ft
Little River – Harmon’s Bridge	2.83	432Ft
Shealy Road Access	15.62	1.5Miles
Crayne's Bridge Park	10.24	3710Ft
Shealy Tract	40	7968Ft
Little Saluda Point	14.18	1147Ft
Rocky Creek	102	5Miles
Old Corley Bridge Road Canoe Access	2	150Ft
Total	258.59	99.93 Miles

Total Acreage Inside PBL =

258.59

Summary

	Acres	Shoreline
Existing Recreation Sites (Includes Billy Dreher Island)	411.19	14.7 Miles
Existing Future Recreation Sites	252.42	9.12 Miles
Islands (62)	100	13.81Miles
Lower Saluda River Recreation Sites	165.6	1.36Miles
Proposed New Future Recreation Sites	258.59	9.93 Miles
Total	1187.81	48.92Miles

Commerce Association of Lake Murray

Commerce Association of Lake

Murray

Southshore Marina

Jakes Landing

Lighthouse Marina

Lake Murray Marina & Yacht Club

Lake Murray Boat Club

Sea Ray

Sea Tow Lake Murray

HydroTech Marine

Siesta Cove

Big Birds Landing

Quality Marine

Holland's Marina

Putnam's Landing

Acapulco USA

Interested Businesses

Dockside Resturant
Palmetto Graphix
Marine Surveys Inc.
Benchmark Marine Services
Advanced Docks
Jacks Docks N Decks
Ray Clepper Inc.
Nationwide Insurance
Spinners Marina
Breakwater Docks
Carolina Boatworks
Mid Carolina Marine
Outdoor RV & Marine
Lake Tours/ / Southern Patriot

Brown Marine&LM Boat Rentals
Dexndox, Inc.
Captain's Choice Marine
Mobile Trailer Service
Turner's Point
Carolina Inboard
Southlake Marine
Columbia Powersports
Carolina Honda
Cyclone Motorsports
Palmetto EZ Dock
Lanier Sailing Academy @ Lake
Murray

Mission Statement

The Commerce Association of Lake Murray provides a voice for the business community serving Lake Murray and, in doing so, we shall seek to promote and protect natural resources, promote education for safe and responsible boating, maintain and expand the economic viability of facilities and services, and act as a liaison between the boating public, and regulators and legislators, so Lake Murray may be enjoyed by all for generations to come.

Mission Statement

The Commerce Association of Lake Murray provides a voice for the business community serving Lake Murray and, in doing so, we shall seek to promote and protect natural resources, promote education for safe and responsible boating, maintain and expand the economic viability of facilities and services, and act as a liaison between the boating public, and regulators and legislators, so Lake Murray may be enjoyed by all for generations to come.

Mission Statement

The Commerce Association of Lake Murray provides a voice for the business community serving Lake Murray and, in doing so, we shall seek to **promote and protect natural resources**, promote education for safe and responsible boating, maintain and expand the economic viability of facilities and services, and act as a liaison between the boating public, and regulators and legislators, so Lake Murray may be enjoyed by all for generations to come.

Mission Statement

The Commerce Association of Lake Murray provides a voice for the business community serving Lake Murray and, in doing so, we shall seek to promote and protect natural resources, **promote education for safe and responsible boating**, maintain and expand the economic viability of facilities and services, and act as a liaison between the boating public, and regulators and legislators, so Lake Murray may be enjoyed by all for generations to come.

Mission Statement

The Commerce Association of Lake Murray provides a voice for the business community serving Lake Murray and, in doing so, we shall seek to promote and protect natural resources, promote education for safe and responsible boating, **maintain and expand the economic viability of facilities and services**, and act as a liaison between the boating public, and regulators and legislators, so Lake Murray may be enjoyed by all for generations to come.

Mission Statement

The Commerce Association of Lake Murray provides a voice for the business community serving Lake Murray and, in doing so, we shall seek to promote and protect natural resources, promote education for safe and responsible boating, maintain and expand the economic viability of facilities and services, and **act as a liaison between the boating public, and regulators and legislators,** so Lake Murray may be enjoyed by all for generations to come.

Mission Statement

The Commerce Association of Lake Murray provides a voice for the business community serving Lake Murray and, in doing so, we shall seek to promote and protect natural resources, promote education for safe and responsible boating, maintain and expand the economic viability of facilities and services, and act as a liaison between the boating public, and regulators and legislators, **so Lake Murray may be enjoyed by all for generations to come.**

Communications

**One point contact to and from the
business community**

SCE&G

DNR

Governmental Agency's

Cap. City/ Lake Murray Country

News Media

Residents and Visitors

Homeowner's Associations

Other Associations/Clubs

Local Schools

Involvement in Issues that Impact the Lake Murray area

**Re-License
Lake Access**

**Economic Impact of Regulations
Supporting existing Marinas and Landings
Favorable business environment
Avoid unintended consequences
Offer Help and expertise**

Long Term Goals

Expand season

More activities

Promote Clean/Safe Boating

Destinations

Points of Interest

Grow Boating

Short term Goals

Clean Marina Certification

Expand group

Get the word out

Formalize organization

Align with other groups

- a. Home owners groups
- b. SC Marine Associations
- c. **Business** Associations
- d. Capital City / Lake Murray

Country

- e. National Grow Boating Initiative

Commerce Association of Lake Murray

The Commerce Association of Lake Murray is committed to providing a voice for the business community serving Lake Murray and in doing so, we shall seek to, promote and protect; natural resources education for safe and responsible boating, **maintain and expand economic viability of facilities and services,** and act as a liaison between public regulators and legislators, so Lake Murray may be enjoyed by all for generations to come.

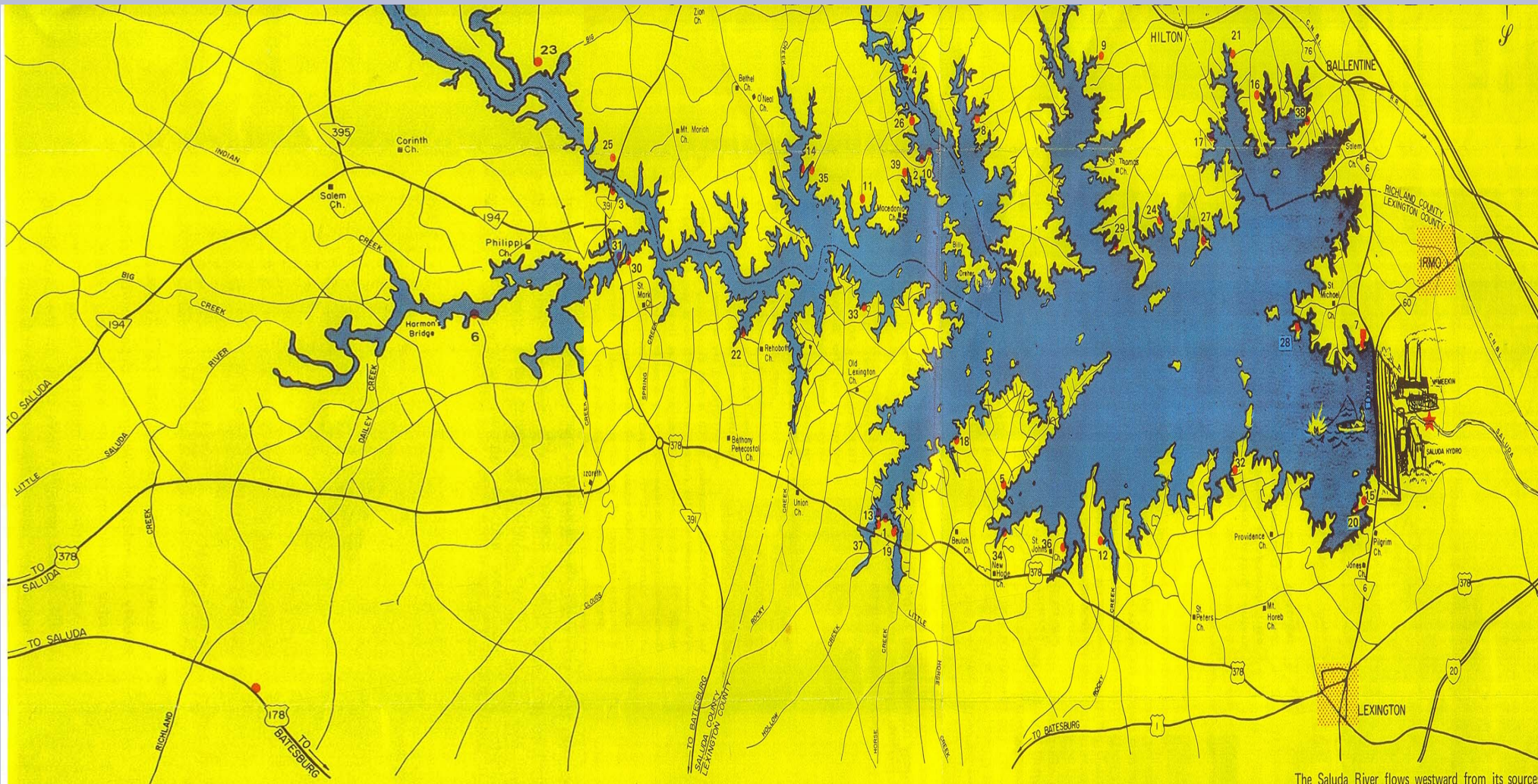
Marinas improve our economy.

Meeting the needs of
the community:

Commerce Association of Lake Murray
is formally requesting that SCE&G
make an amendment to the
moratorium on multi slip dock permits
to allow permit applications at existing
commercial marinas.

A serene sunset scene over a body of water. The sky is a mix of soft pinks, oranges, and blues, with the sun low on the horizon. The water reflects the colors of the sky. In the foreground, there are dark silhouettes of bare tree branches. In the middle ground, a boat is visible on the water, and a dark line of trees marks the far shore. The overall mood is calm and contemplative.

Questions?



KEY TO LANDINGS AND CLUBS

1. ADAMS' LANDING	F-5	16. JOHNSON'S MARIA	I-3	31. SHEALY'S LANDING	D-4
2. AMICK'S LANDING	F-3	17. LAKE MURRAY B'3. & SPTS. CLUB*	I-3	32. SNELGROVE'S LANDING	I-5
3. BLACK'S BRIDGE MARINA	D-3	18. LAKE MURRAY FM. CAMPGRD.	G-5	33. SWYGERT'S LANDING	F-4
4. BUCK'S MARINA	F-3	19. LAKESIDE MARIN	F-5	34. TAYLOR'S LANDING	G-5
5. CIRCLES CLUB *	G-5	20. LEXINGTON BOA' CLUB *	J-5	35. TOM'S LANDING	E-3
6. COLUMM'S LANDING	C-4	21. LOCKHART'S LANING	I-3	36. TURNER'S LANDING	G-5
7. COLUMBIA SAILING CLUB*	J-4	22. MARTIN'S LANDI ^G	E-4	37. WEED'S LANDING	F-5
8. CRYSTAL LAKE FAM. CAMPGRD.	G-3	23. MAYER'S LANDIN	C-3	38. WELL'S MARINA	J-3
9. EPTING'S CAMP	H-3	24. MILLS' LANDING	H-3	39. WILSON'S LANDING	F-3
10. FRIENDLY BOATING CLUB *	F-3	25. MORRIS' LANDIN	D-3	40. RAY'S MOTEL	F-7
11. HAMM'S LANDING	F-3	26. NEWBERRY LION CLUB *	F-3	41. NEWBERRY EXCHANGE CLUB *	F-3
12. HENDRIX'S LANDING	H-5	27. PALMETTO LANDI ^G	I-4	42. CRAYNE'S LANDING	F-3
13. HOLIDAY SHORES LANDING	F-5	28. PINE ISLAND CLL *	I-4	43. SNUG HARBOR	F-3
14. HOLLAND'S LANDING	E-3	29. PUTMAN LANDIN	H-4		
15. JAKE'S LANDING	J-5	30. RIKARD'S LANDI ^G	D-4	PRIVATE CLUB *	

LANDINGS AND CAMP SITES SHOWN ARE FOR GENERAL INFORMATION ONLY AND ARE IN APPROXIMATE LOCATION.

MAP OF
LAKE MURRAY
AND VICINITY

SOUTH CAROLINA ELECTRIC AND GAS CO.

CORRECTED TO JUNE 1, 1968

GRAPHIC SCALE IN MILES

COMPILED FROM AERIAL PHOTOGRAPHS & S.C. HWY. DEPT. COUNTY MAPS
LAKE OUTLINE INDICATES 354 FOOT LAKE LEVEL

REVISED MAY 1, 1969

The Saluda River flows westward from its sources the Blue Ridge Mountain chain, turns south, enters Lake Murray, spins the turbines of Saluda Hydro, and winds its way to confluence with the Broad River in Columbia.

Map Legend

Indicates S. C. E. & G. Co. ■
Public Parks ■
McMeekin Steam and Saluda Hydro Generating Complex ★



Adaptive Management in the Context of FERC Licenses

Recreation RCG
February 7, 2007



What is Adaptive Management?

A type of natural resource management in which decisions are made as part of an ongoing science-based process.

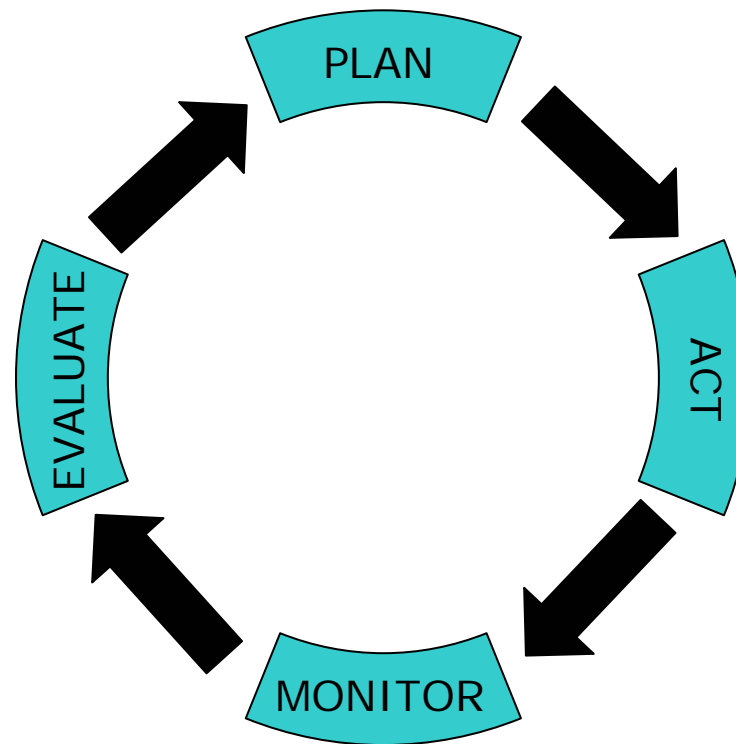
Source: Unified Federal Policy for a Watershed Approach to Federal Land and Resource Management



Adaptive Management Basic Steps

- 1. Determine the goals for the resource.
- 2. Method to test or evaluate if goals are met.
- 3. Ability to change based on evaluation.

The Cycle of Adaptive Management



Adapted from Pajak, 2000



Plan

- Clarify goals
- Assess status and trends of related indicators
- Develop and compare management alternatives
- Seek consent and plan actions



Act

- Implement planned actions
- Reward integrity and results



Monitor

- Monitor all indicators
- Communicate results



Evaluate

- Compare actual vs. planned results
- Analyze indicator relationships
- Adapt and repeat cycle



What does FERC think?

- “Adjustments to measures required during the license term will be based on information gleaned from ongoing monitoring or other post-license studies”

Source: Policy Statement on Hydropower Licensing Settlements



FERC License Examples

- Sinclair Project (FERC No. 1951)
- Clark Fork Project (FERC No. 2058)
- Mokelumne River Project (FERC No. 137)
- Carpenter-Remmel Project (FERC No. 271)
- Baker River Project (FERC No. 2150)



FERC Concerns

FERC may modify adaptive management measures to:

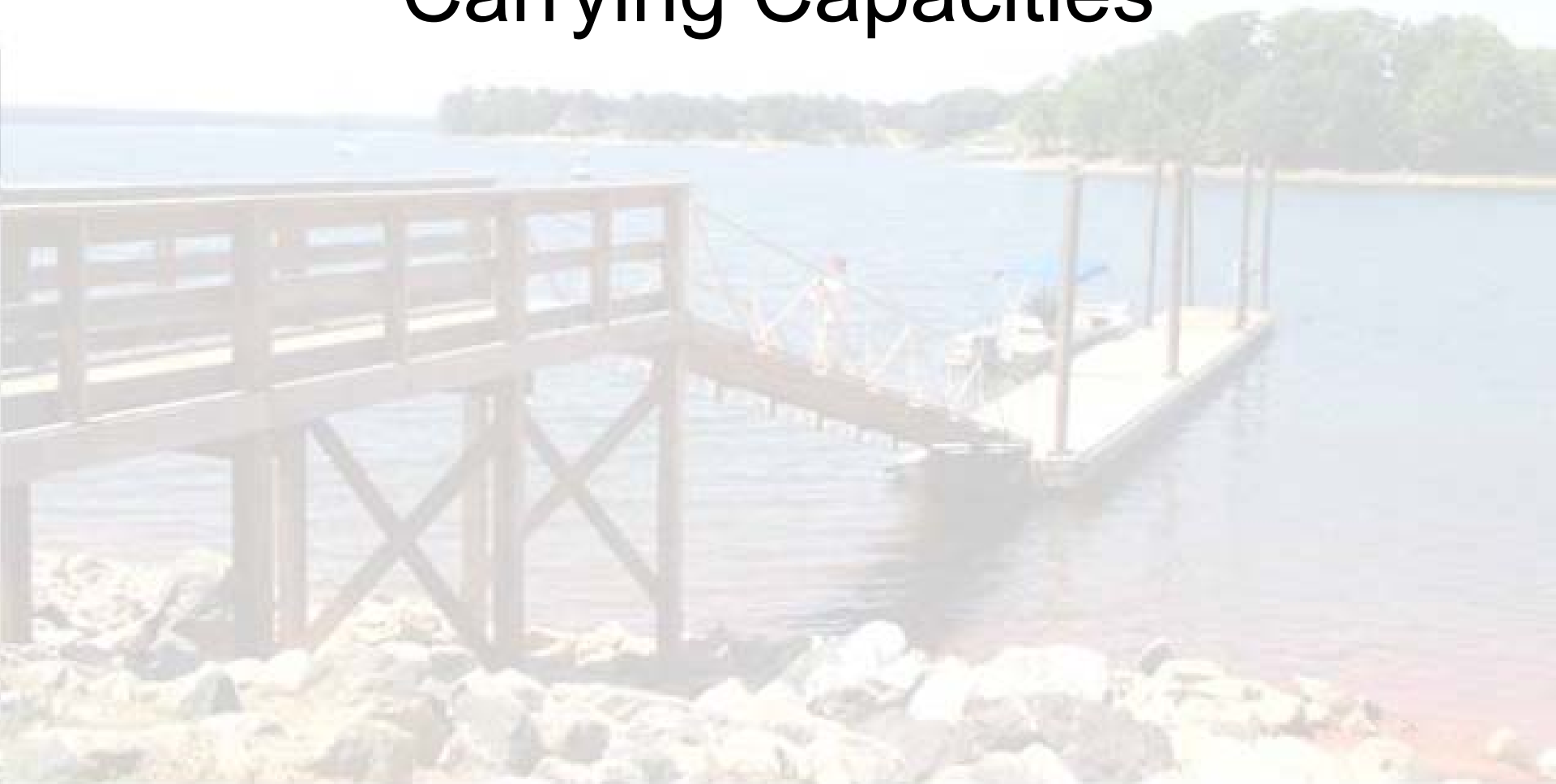
- (i) ensure limitations on changes
- (ii) provide for FERC review and approval of decisions.



Where are we?

- Still in planning stage
- Establishing baseline of management indicators
- Planning actions

Boat Densities and Carrying Capacities



Boat Density and Carrying Capacity

What are they?

Why do I care?

What does this have to do with relicensing?

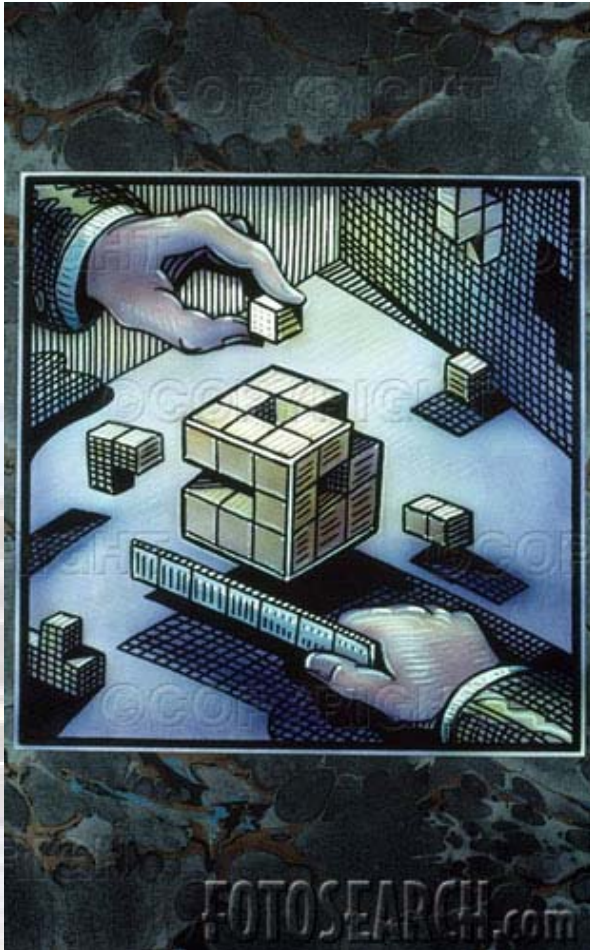


Definitions

- ▲ **Boat density** - The number of boats per unit area. May include type of boat/activity, and may address shoreline configuration and availability of open water
- ▲ **Carrying capacity** – The type and level of visitor use that can be accommodated while sustaining the desired resource and social objectives (NPS, 1997)

Boat Density

- ▲ Shows where people are boating
- ▲ Improves understanding of how and where a lake is used
- ▲ Provides input on shoreline management decisions
 - Identifies where new private, commercial, and/or public development may be accommodated without detracting from use on the water



- ▲ Boat density is a building block used to estimate carrying capacity
- ▲ Other building blocks might include number/type of public access sites, shoreline development, sensitive resources, water quality....and the list goes on

Compared...

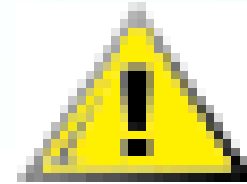
Boat Density May Include...

- ▲ Number of boats per acre
- ▲ Type of boat or activity
- ▲ Shoreline configuration
- ▲ Volume of use (user expectations based on proximity to population and shoreline development)

Carrying Capacity May include...

- ▲ Accident data (on the water)
- ▲ Aquatic and submerged habitats
- ▲ Boat density
- ▲ Commercial access & development
- ▲ Cultural & historical properties
- ▲ Flora and fauna
- ▲ Private / residential access & development
- ▲ Public access & development
- ▲ Public or user preferences
- ▲ Shoreline configuration
- ▲ Shoreline erosion
- ▲ Shoreline habitats
- ▲ Special events (tournaments, regattas)
- ▲ Water quality

Carrying Capacity



USE WITH CAUTION!

Remember, usually a FERC licensee does not control boating on the water.

Carrying capacity estimates can guide management decisions, but are generally not used by licensees to limit boating activity. A licensee will not count boats daily and start evicting boaters from a lake when the number of boats exceeds an estimated carrying capacity!

▲ Provides an estimate of a number of boats (or people) that can be accommodated physically and socially by a specific area of water

First...

- ▲ *Typically*, a licensee is responsible for managing recreational use and related development within its Project Boundary on the shoreline or submerged lands.
- ▲ *Usually*, a state agency or agencies are responsible for managing activity on the water at FERC-licensed projects.
 - Fishing, boating, etc.

Second...Avoid Duplication of Effort

Carrying Capacity Study

- ▲ **Accident data (on the water)**
- ▲ Aquatic and submerged habitats
- ▲ Boat density
- ▲ Commercial access & development
- ▲ Cultural & historical properties
- ▲ Flora and fauna
- ▲ Private / residential access & development
- ▲ Public access & development
- ▲ Public or user preferences
- ▲ Shoreline configuration
- ▲ Shoreline erosion
- ▲ Shoreline habitats
- ▲ **Special events (tournaments, regattas)**
- ▲ Water quality

Shoreline Management Plan

- ▲ Aquatic and submerged habitats
- ▲ Boat density
- ▲ Commercial access & development
- ▲ Cultural & historical properties
- ▲ **Dredging**
- ▲ Flora and fauna
- ▲ **Permitting**
- ▲ Private / residential access & development
- ▲ Public access & development
- ▲ Public or user preferences
- ▲ Shoreline erosion
- ▲ Shoreline habitats
- ▲ Water quality

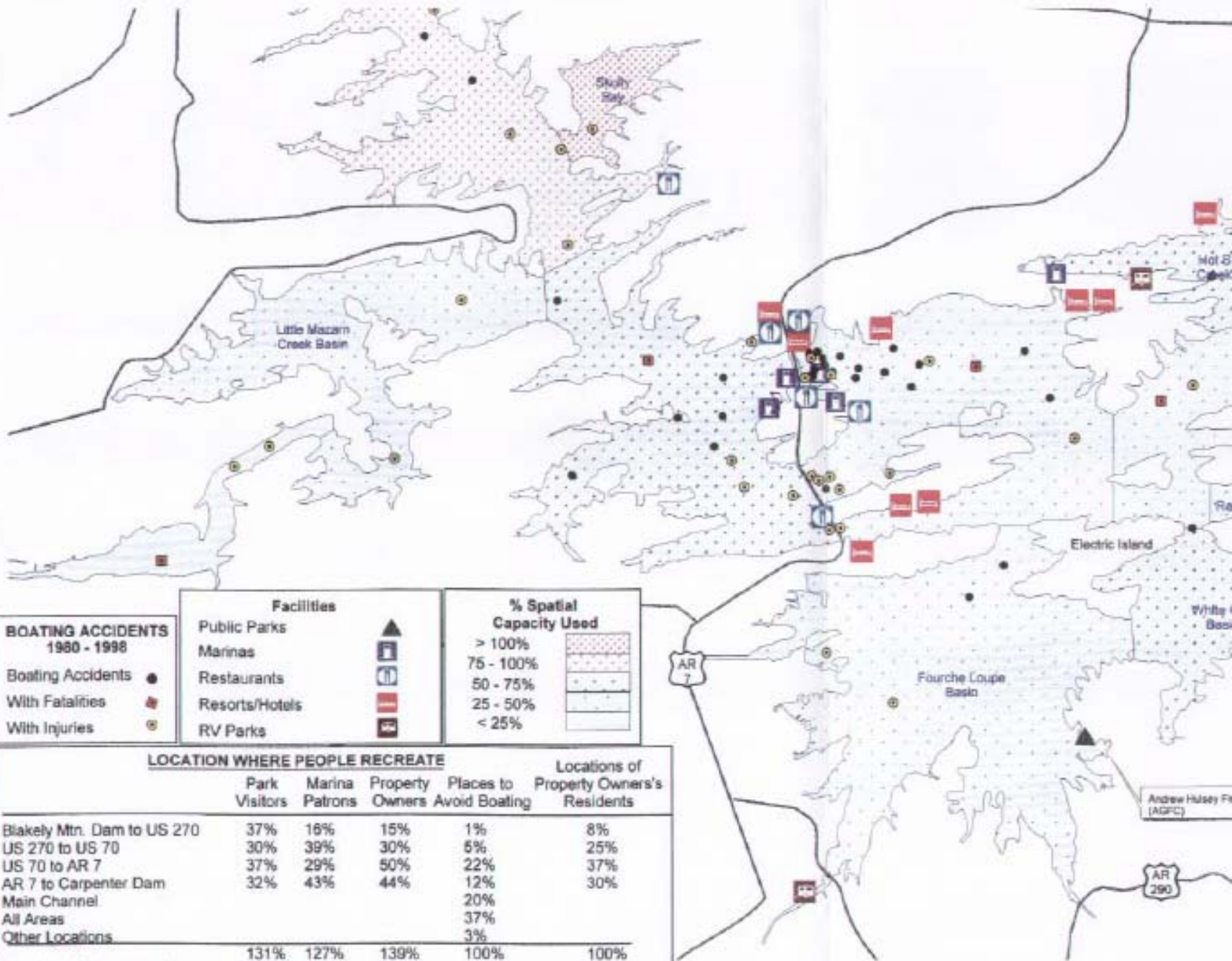
Examples

- ▲ Entergy Arkansas, Inc. for the Carpenter-Remmel Project (1999)
- ▲ Duke Energy Corp. for the Nantahala Area Projects (2003)
- ▲ GRDA for the Pensacola Project (2006)

Entergy's Lake Hamilton
and Lake Catherine
study...

Aerial counts of boaters (including anglers, jet skiers, PWC), water skiers, tubers, pleasure boaters, tour boats, and on the river there are anglers, floaters, and surfers) were completed on a sample of days for a one year period.

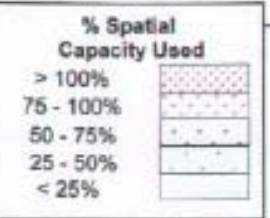
The sample was distributed within each month proportionate to the total number of days in each month. A total of 40 days were sampled at each impoundment. Within each month, sample days were stratified by day type (weekdays, weekend days, and holidays) and time of day.



**BOATING ACCIDENTS
1980 - 1998**

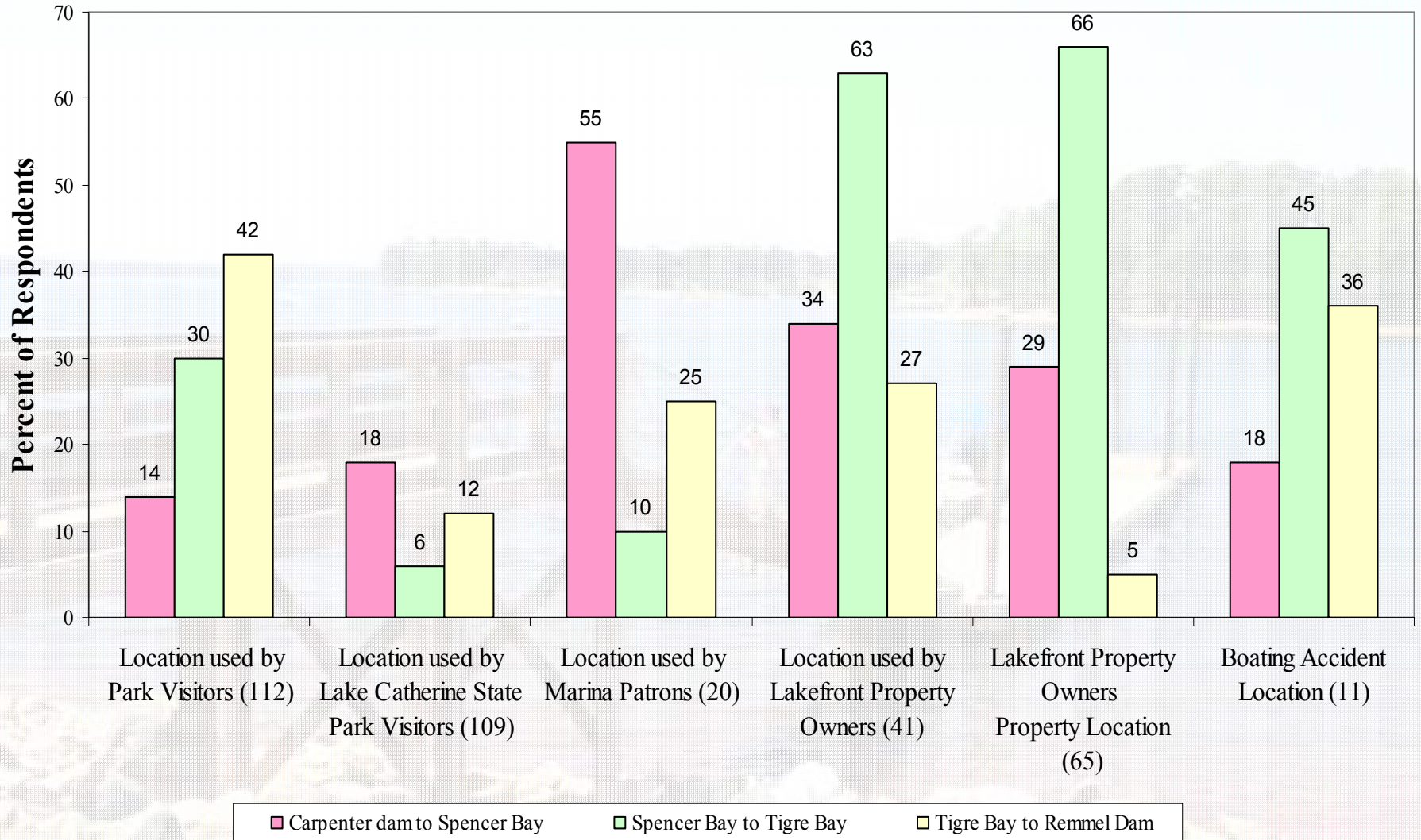
- Boating Accidents ●
- With Fatalities ●
- With Injuries ●

- Facilities**
- Public Parks ▲
 - Marinas ⚓
 - Restaurants 🍽️
 - Resorts/Hotels 🏠
 - RV Parks 🚐



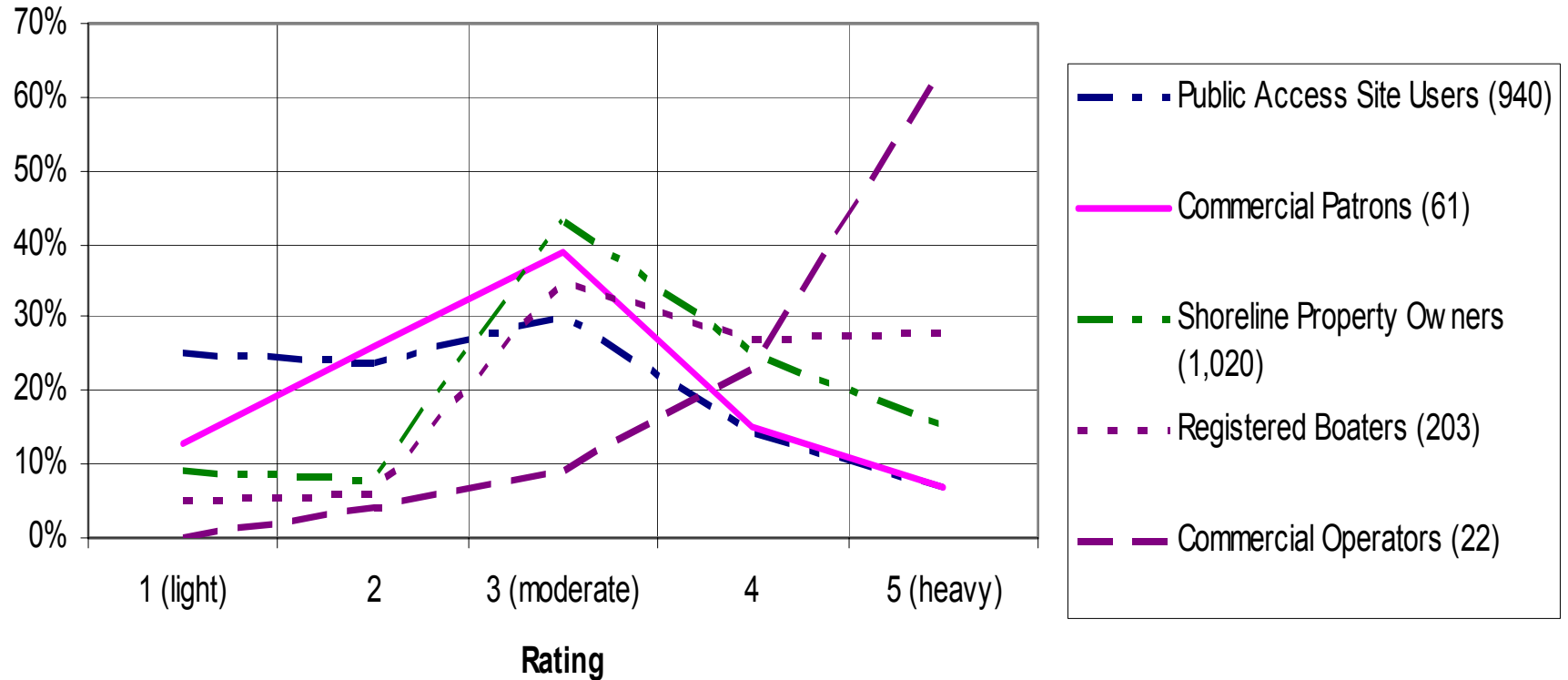
	LOCATION WHERE PEOPLE RECREATE				Locations of Property Owners's Residents
	Park Visitors	Marina Patrons	Property Owners	Places to Avoid Boating	
Blakely Mtn. Dam to US 270	37%	16%	15%	1%	8%
US 270 to US 70	30%	39%	30%	5%	25%
US 70 to AR 7	37%	29%	50%	22%	37%
AR 7 to Carpenter Dam	32%	43%	44%	12%	30%
Main Channel				20%	
All Areas				37%	
Other Locations				3%	
(Number of Responses)	131% (306)	127% (84)	139% (538)	100% (138)	100% (918)

Use of Lake Catherine



Nanatahala Weekend Crowding

Perceptions of Use Levels on Peak Season Weekends





07/01/2005



What Can We Learn?

- ▲ Identify areas of unique uses
- ▲ Identify areas of crowding
- ▲ Identify where use can be spread out to help protect/manage other resources
- ▲ Inputs into shoreline management decisions
- ▲ Identify information needs
- ▲ Identify needed expansions at facilities to address user needs

Licensee Considerations

- ▲ **Avoid setting a carrying capacity number that will require restrictions on public access**
 - ▲ FERC does not advocate restricting access to project waters. Tailor decisions based on all resources and remember, environmental and social considerations are dynamic: management plans should be too.
- ▲ **Determine the metrics that you will consider before starting data collection**
 - ▲ There's nothing more frustrating than finding out that the data collected will not answer the question asked.
- ▲ **Be comfortable with agencies and stakeholders – know where your responsibilities begin *and end***
 - ▲ A licensee's responsibility is to provide and manage access to project waters. It may not include management of activity on the water.
- ▲ **Work with agencies and stakeholders.**
 - ▲ You may need them to provide information (data, expertise, etc) or implement some of the resulting recommendations. Cooperation and buy-in from stakeholders will always result in a more accepted and workable management plan.

Lower Saluda Scenic River & Corridor Plans



Lower Saluda
River
Recreation



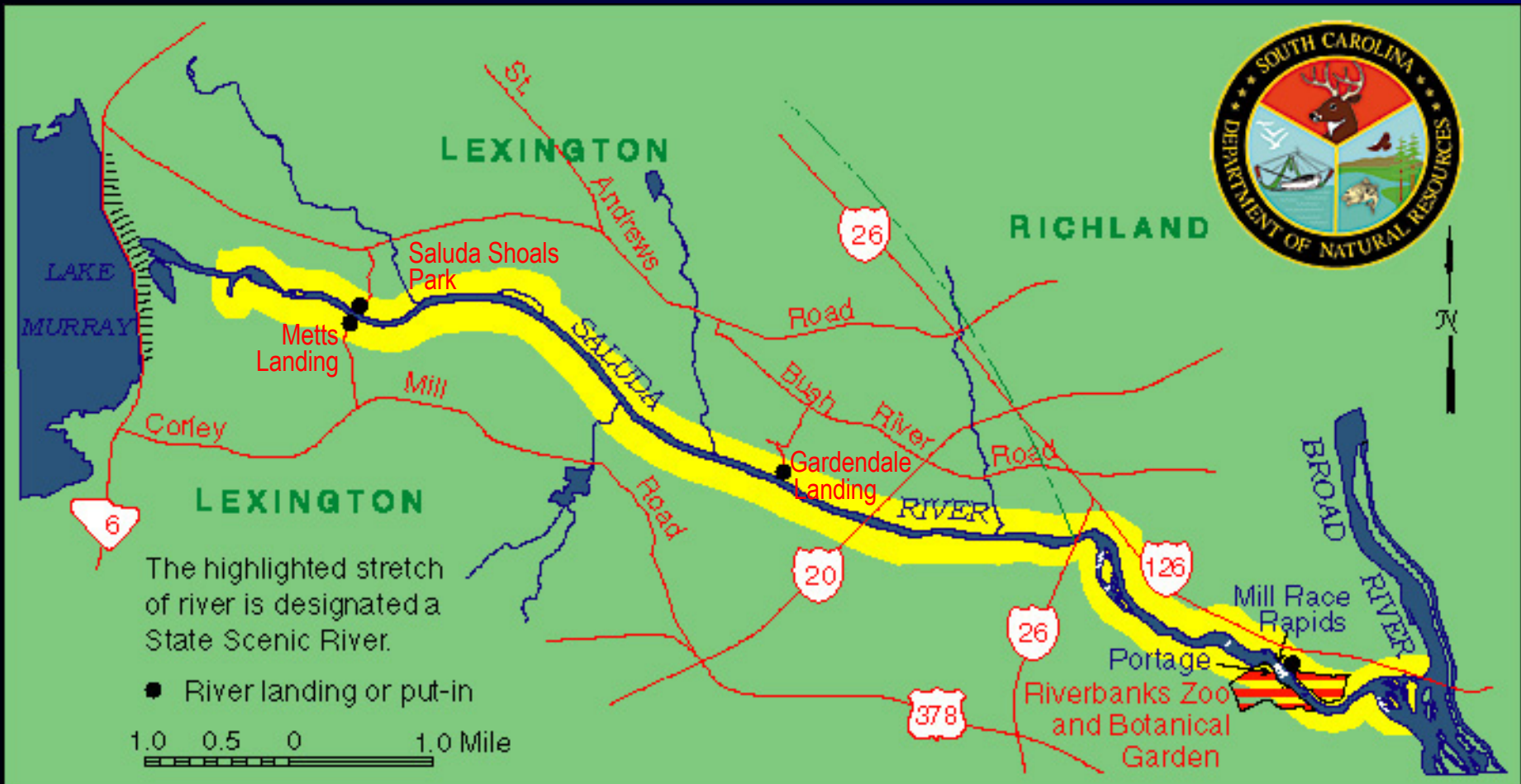
S.C. Scenic Rivers Act

Purpose of Act -- to protect unique and outstanding river resources of South Carolina

Features --

- Cooperative, voluntary management program
- Involves landowners, river users, community interests, and SCDNR
- Scenic river management plans
- Tax incentives for conservation easements

Lower Saluda State Scenic River





Lower Saluda Scenic River



Lake Murray Dam





Upper River



Ledge at Corley Island

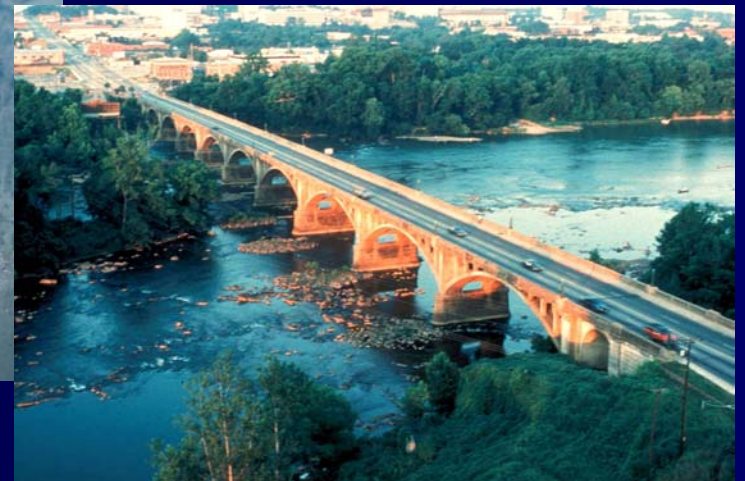
Lower River

Confluence with Broad



Mill Race Rapids

Gervais Street Bridge



Oh Brother



Ocean Blvd

Wildlife



Lower Saluda Scenic River Advisory Council

- Tommy Boozer: SCE&G
- Ed Diebold: Riverbanks Zoo & Garden
- Guy Jones: River Runner outfitters
- Larry Jones: Shaw Corp
- Malcolm Leaphart: Trout Unlimited
- Bill Marshall: SCDNR
- Tom Stonecypher: residential landowner
- Dan Well: Irmo-Chapin Recreation Commission
- Rick Wilson: residential landowner

Ex-officio members

- Tony Bebber: SCPRT
- Parkin Hunter: Columbia Audubon
- Ann Jennings: Congaree Land Trust
- Gerrit Jobsis: Coastal Conservation League / American Rivers
- Karen Kustafik: Palmetto Paddlers
- Charlene Coleman: American Whitewater

Advisory Council Objectives

Lower Saluda River Corridor Plan – 1990

Lower Saluda Scenic River Corridor Plan Update – 2000

- Protect/conserve natural, cultural, and scenic qualities of river corridor
- Improve water quality and aquatic habitat
- Improve quality and management of public access
- Improve river-user safety

The Lower Saluda River Corridor Plan



1990 Corridor Plan

Lower Saluda River Task Force

1988 - 1990

SC Water Resources Commission

SC Dept of Parks, Recreation & Tourism

City of Columbia Mayor

Central Midland COG

SC Wildlife Federation

Landowners on Saluda (3)

SC Wildlife and Marine Resources Dept

SC Dept of Health & Environment Control

Audubon Society

Lexington County Recreation Com

Irmo-Chapin Recreation Com

State Budget and Control Board

SC Land Resources Commission

Lexington County Council

River Runner, Inc

Barron's Fishing and Hunting Center

Columbia Convention/Visitors Bureau

Riverbanks Zoo

Trout Unlimited

Richland County Council

Greater Columbia Chamber of Commerce

Governor's Office

SC Electric and Gas Company

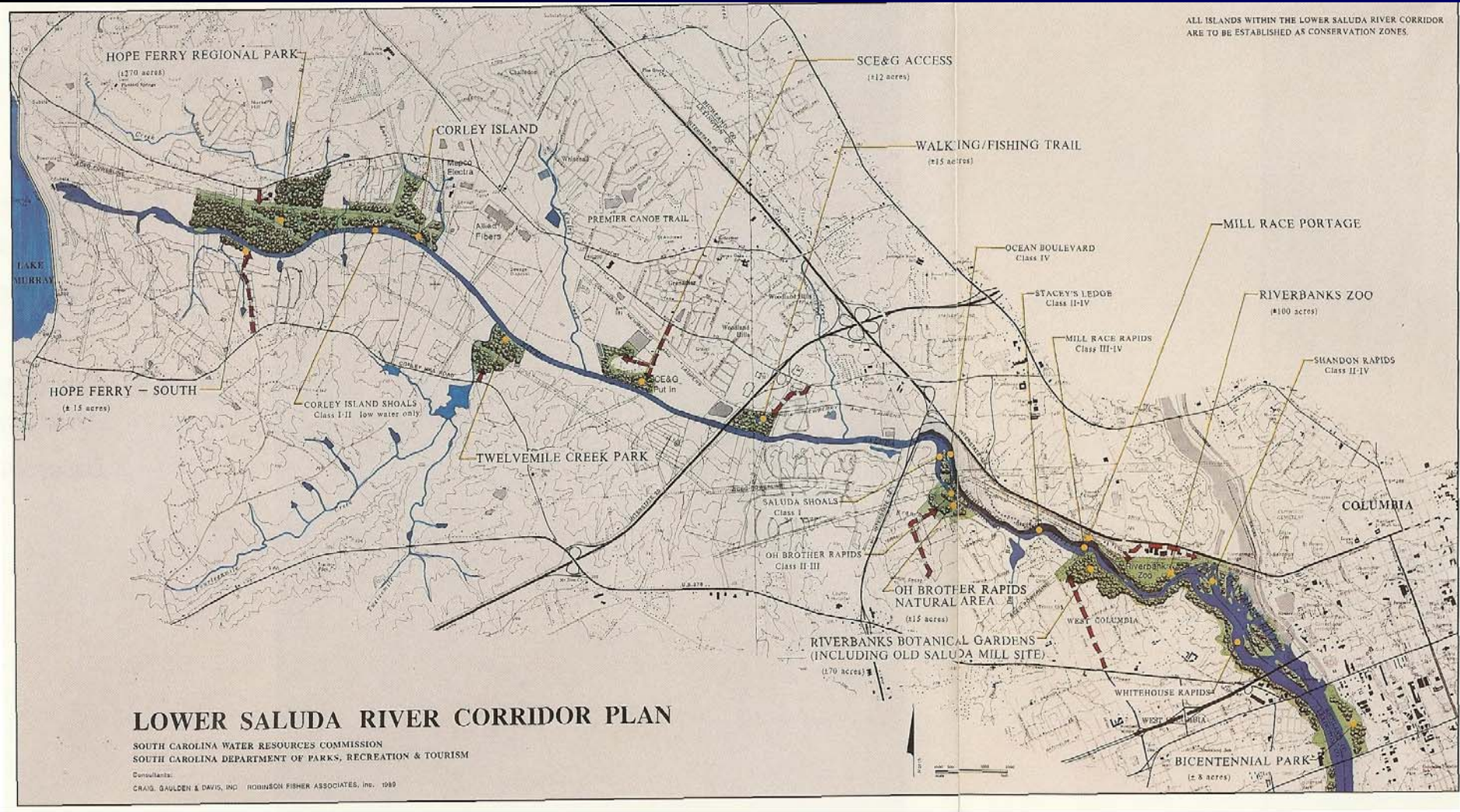
Sierra Club

Palmetto Paddlers

City of West Columbia Mayor

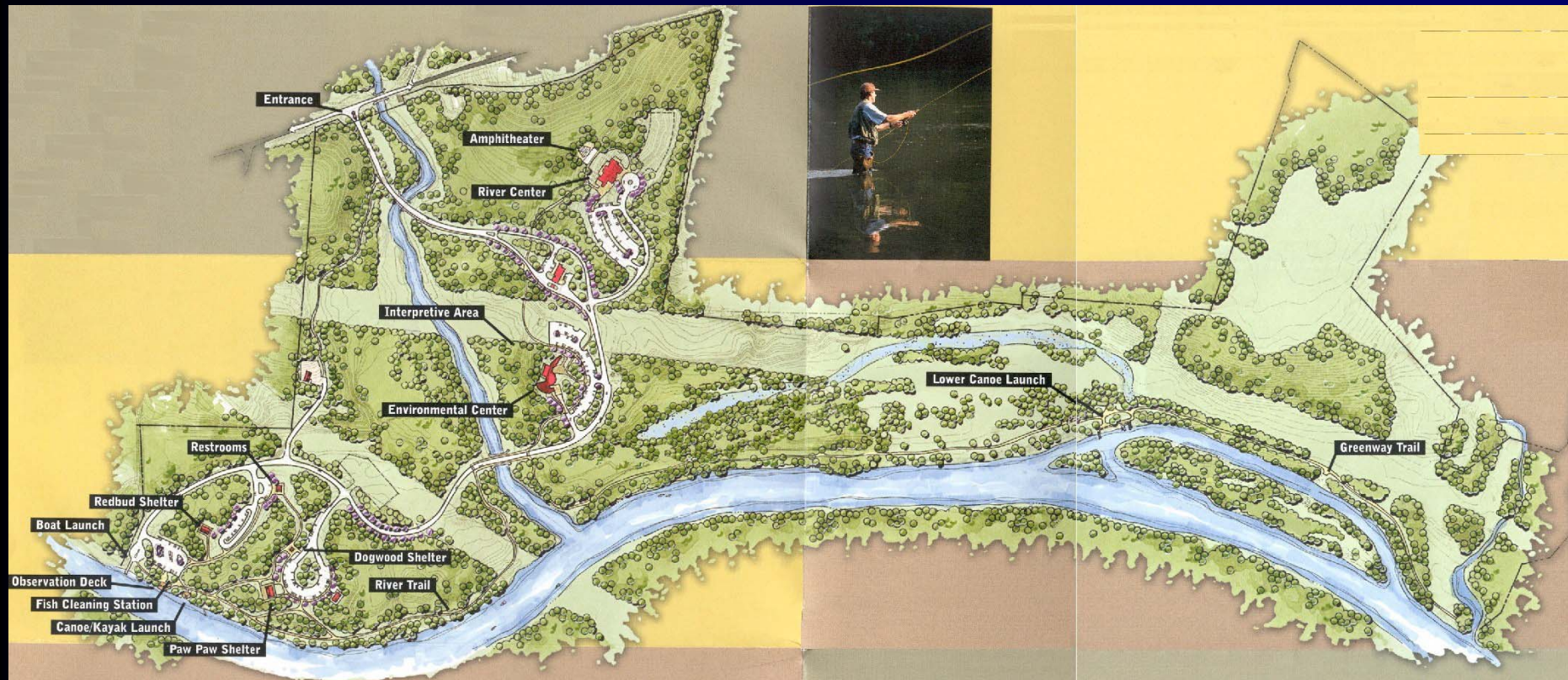
Task Force Committees

- Access and Facilities
- Historic and Archaeological Sites
- Law Enforcement
- Litter
- Resource Protection
- Tourism and Promotion
- User Safety
- Implementation



1990 Corridor Plan Concepts

Saluda Shoals Park



Park plan as developed by Irmo-Chapin Recreation Commission

Figure 12. • Conceptual Park Opportunity Analysis — Twelvemile Creek



Lower Saluda Scenic River Corridor Plan Update



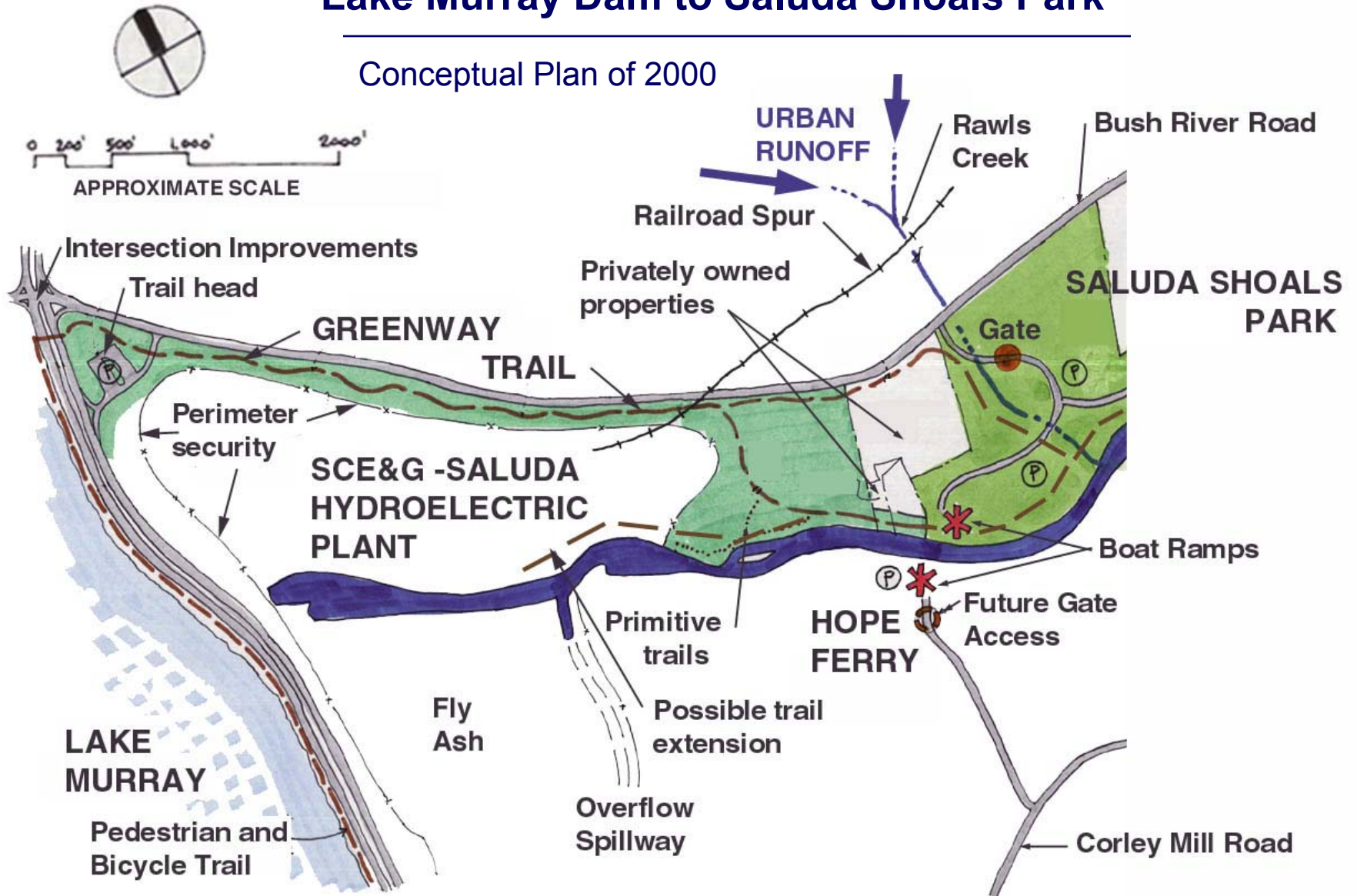
Corridor Plan Update of 2000



Lower Saluda Scenic River Corridor Plan Update

Lake Murray Dam to Saluda Shoals Park

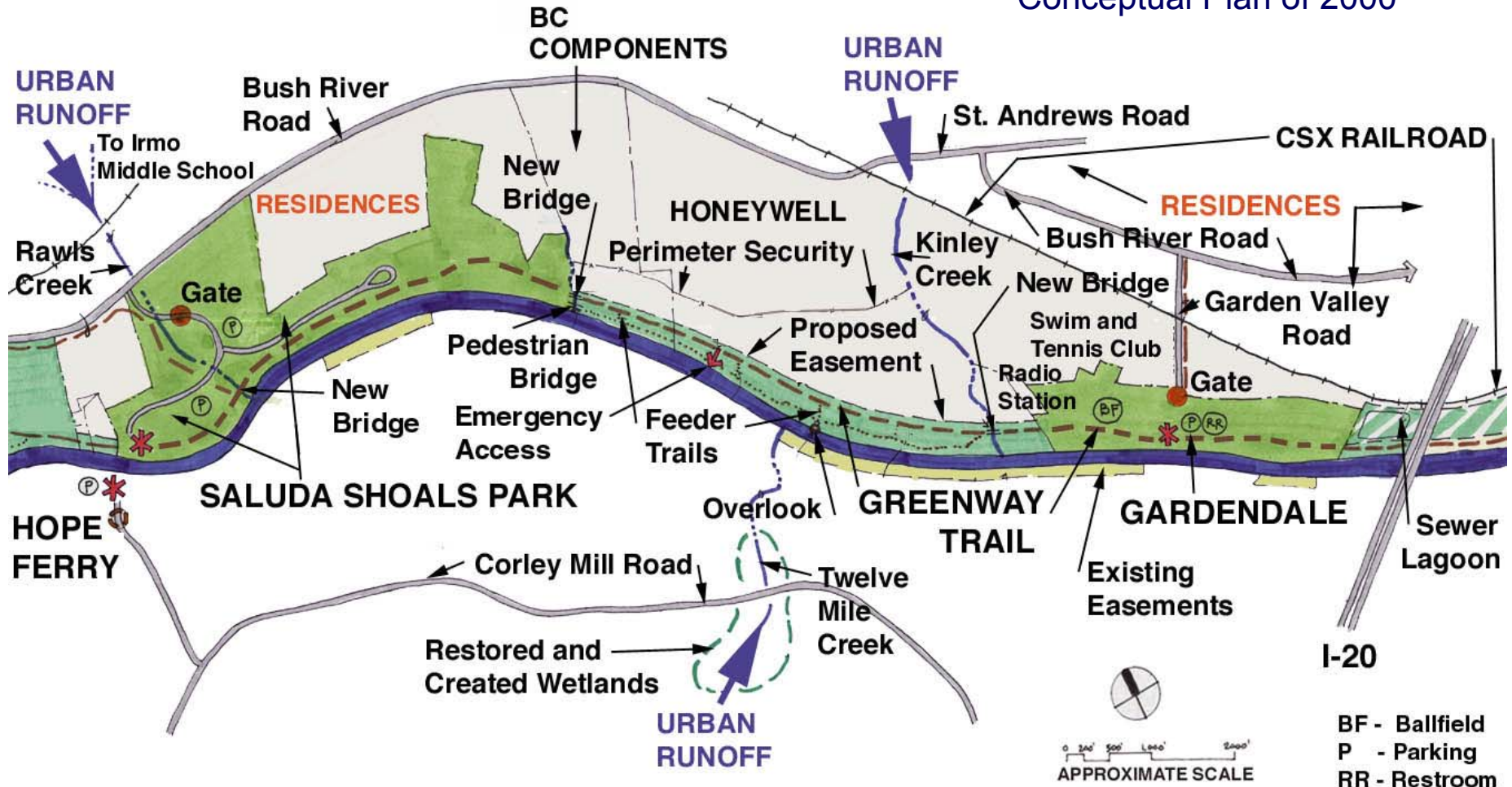
Conceptual Plan of 2000



Lower Saluda Scenic River Corridor Plan Update

Saluda Shoals Park to Gardendale Landing

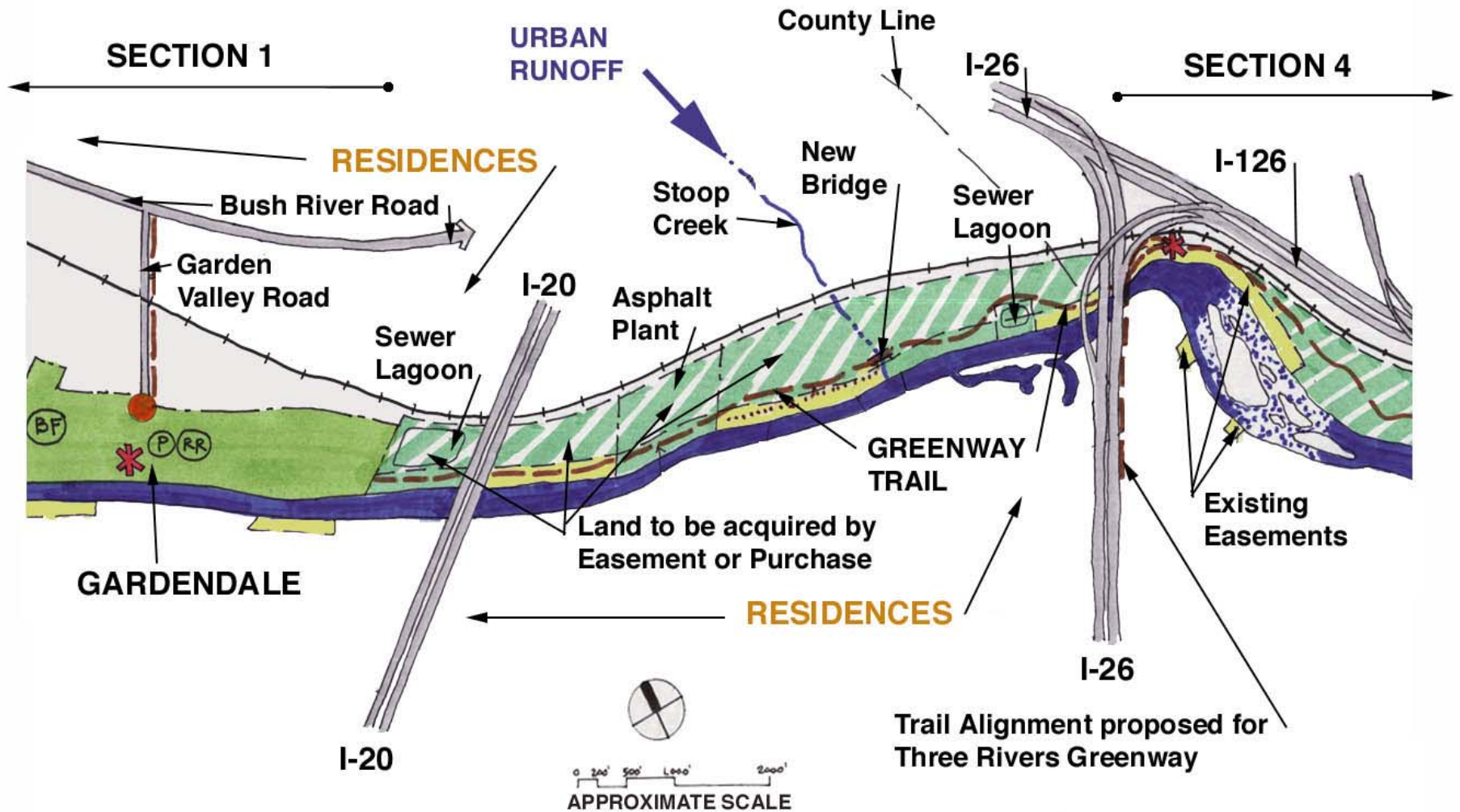
Conceptual Plan of 2000



Lower Saluda Scenic River Corridor Plan Update

Gardendale Landing to Interstate-26

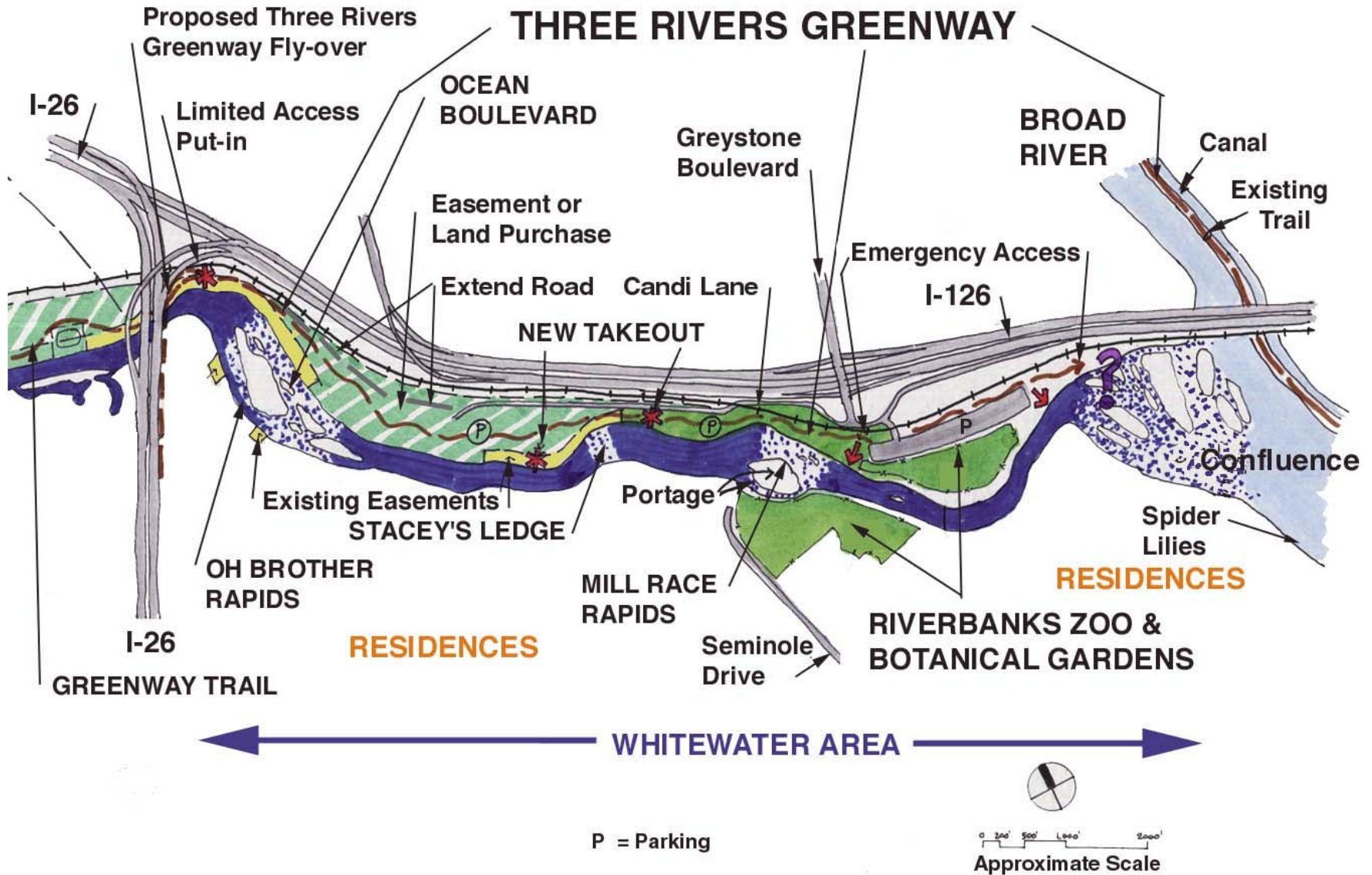
Conceptual Plan of 2000



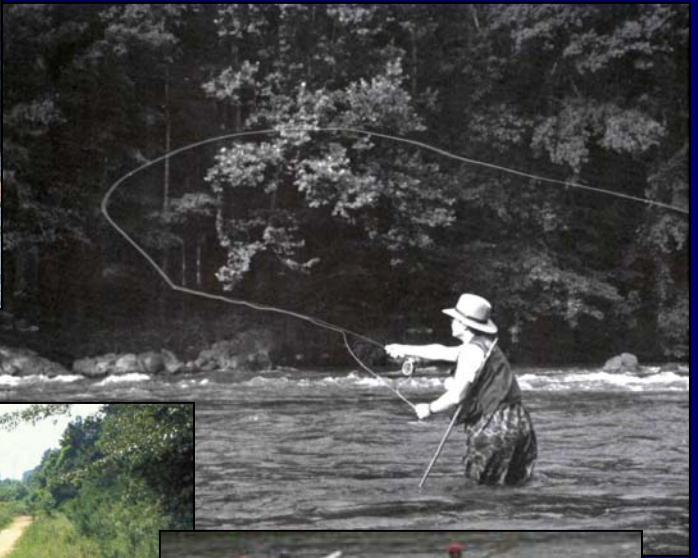
Lower Saluda Scenic River Corridor Plan Update

Interstate-26 to Broad River

Conceptual Plan of 2000



Lower Saluda
River
Recreation



Desired Outcomes for Recreation

Access/Facilities, Flows, and Safety

- Lower Saluda River Greenway Trail
- Safety egress above Mill Race Rapids
- Conservation of all SCE&G lands on river
- Minimum flows for recreational navigation
- Ramping flow releases & improved warning system
- Improved communication of flow conditions
- Scheduled flows for recreation

End

